

# Catalog of Glassware

FOR

The Drug, Chemists, Surgeons,  
Photographers and  
Watchmakers  
Trade



The Cambridge Glass Co.

Cambridge, Ohio  
U. S. A.

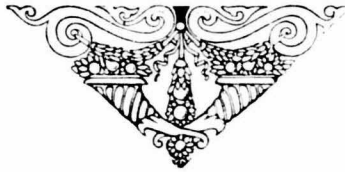


# The Cambridge Glass Co.

Cambridge, Ohio



The Home of "Nearth"



Manufacturers of

## GLASSWARE

For the Drug, Chemical, Sur-  
geons, Photographic Supply,  
and Watchmakers' Trade.



Cambridge  
Ohio

# GLASSWARE



OUR WARE IS GUARANTEED first class in every respect. We make, besides crystal or flint, Blue, Amber and Dark Green colors. Many articles listed herein can be made in any of the above colors, if ordered in sufficient quantities. When forwarding molds, models, or samples to us, please prepay charges. When ordering special designs a sample or drawing, with explicit instructions, should always accompany same. This will obviate lengthy correspondence, and reduce the possibility of making errors.

If you are not able to find your wants in this catalogue write us as we are large manufacturers and make all kinds of glassware.

**Our Confectioners' Catalog** forwarded on application.



## PRIVATE MOLDS.

We solicit orders for private molds for making articles of special design. The advantages are many, for making molds at a glass factory, where experts know all the requirements for delivering smooth and perfect goods. We claim superiority in this department. Send us your models, and state requirements.

**The Cambridge Glass Company**  
**Cambridge, Ohio**



WE TAKE PLEASURE in presenting our price list containing many articles for the use of the Drug, Surgical, Chemical, Photograph Supply and Watchmakers trade.

#### TERMS.

Thirty days net, one per cent. cash 15 days, f. o. b. factory. Payment in funds at par in New York.

We pack carefully and ship goods in merchantable condition, and our responsibility ceases with the signing of shipping receipts.

Claims for missing packages, overcharges in freight, or breakage, should be referred to the transportation companies.

Special private molds net cash in advance.

#### PACKAGES.

Charges for packages, according to size, are added to all invoices as follows:

Boxes or barrels, 50 cents each. Tierces, 55 cents to \$1.00 each. Casks, \$1.00 to \$5.00 each. No deviation made from this rule. Special package list for Export packages.

#### SHORTAGE.

Discrepancies in count or in the ware ordered must be reported promptly upon receipt of the goods. In doing so do not fail to state the name of the packer that appears on the head of the barrel, together with all other markings.

#### ORIGINAL PACKAGE.

The term Original Package Quantity designates that to get the benefit of the lowest price, goods must be ordered in Original Package Lots. When this consists of one barrel, the weight per barrel is given.

**The Cambridge Glass Company**  
Cambridge, Ohio



## HAND ENGRAVED GRADUATES

We use in our engraving department a special device of our own which enables us to warrant the accuracy of our work. Each line on every graduate is determined separately and with the same precision. The principal lines except on double scale and sizes below one-half ounce extend entirely around the graduate. We guarantee each graduate as to accuracy of engraving and fine quality of glass.

Many of our customers desire to have their firm's trade mark or name etched on each graduate. We are prepared to execute this work at a cost of 15 cents per dozen net, plus cost of stamp.

All graduates packed in separate cartons which can be stamped with your name at a very small cost.

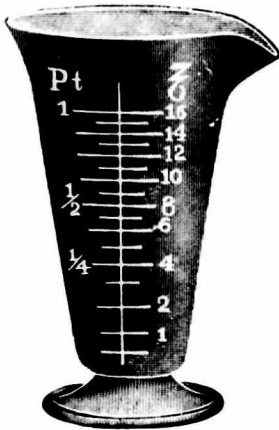
Graduates all shapes, are engraved all ways as follows:

Single American Standard in ounces.

Metric Standard in C. C.

Double Scale is for Single American on one side and Single Metric on the opposite side.

Price List is the same for either shape, Cone Beaker or Perfection.



Cone Shape.  
Illustration shows American Scale.

We guarantee the accuracy of  
all Hand Engraved Graduates



Perfection Shape.  
Illustration shows Metric Scale.



Beaker Shape.  
Illustration shows American Scale.

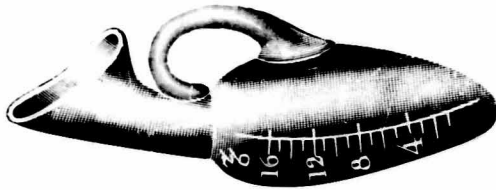


1 ounce Special  
Graduated in minims to 120M  
and in drachms up to 1 oz.

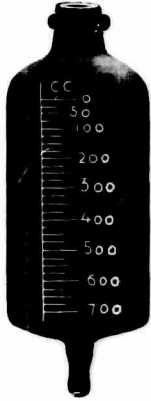


5 pint Jug.  
Graduated in pints.

Can be graduated in Metric Scale or Double Scale. Illustration shows graduation in pints.



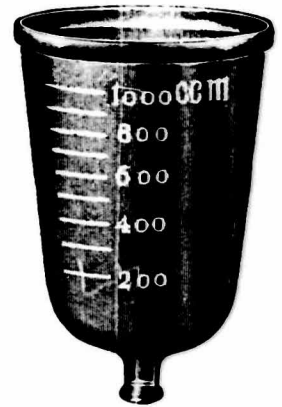
No. 30  
Male or Female Urinal.  
Engraved Graduations.  
Illustration shows Female.  
Also made without handle.



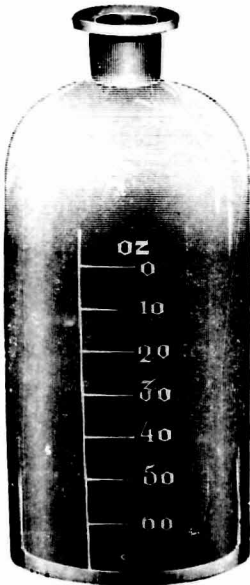
No. 1. Kelly Infusion Bottle.  
Engraved Graduation.  
Also made plain.



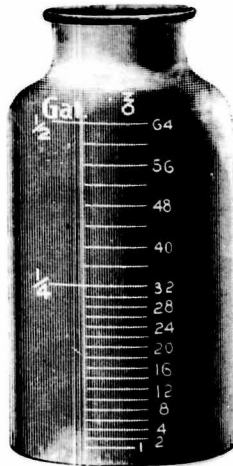
No. 2. Kelly Infusion Bottle.  
Engraved Graduation.  
Also made plain.



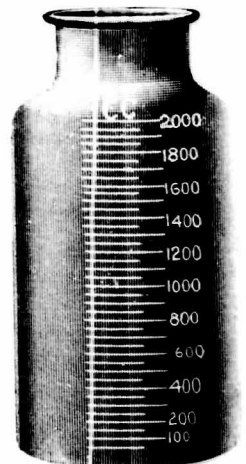
Valentine Receiver.  
Engraved Graduation.  
Also made plain.



Fowler Infusion Bottle.  
Engraved Graduations.



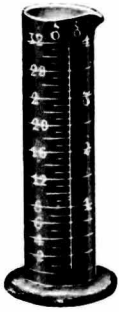
Percolating Jar. Engraved  
Graduations. Single Amer-  
ican Scale in ounces.



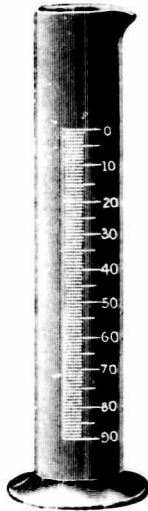
Percolating Jar.  
Engraved Graduations.  
Single Metric in C. C.

Above Jars can be furnished Graduated Double Scale,  
which consists of Single American Scale on one side and  
Single Metric on the other.

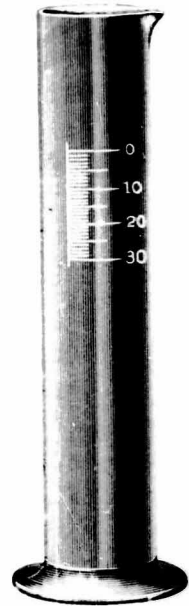




Hand Engraved.  
 Graduated Cylinders on foot.  
 Can be furnished in Single  
 American Standard Scale  
 in oz.  
 Single Metric Standard Scale  
 in C. C.  
 Double Scale—that is Single  
 American on one side and  
 Single Metric on the other.



Milk Test Jar.  
 Graduated 0-90.  
 Hand Engraved.



Milk Test Jar.  
 Graduated 0-30.  
 Hand Engraved.



No. 6. Medicine Finished  
 Edge.  
 Engraved Lines Pressed  
 Figures.



No. 13. Medicine Finished  
 Edge.  
 Pressed Figures.  
 Engraved Lines.  
 1 3/4 in. inside dia., 2 1/2 in. high

**Medicine Glasses with Drug-  
 gist's Name Inserted—Used  
 as an advertisement.**

These Tumblers are marked  
 with Tea, Desert and Table-  
 spoon Graduations. To insure  
 accuracy the measurements are  
 made by hand and the Gradu-  
 ations engraved on the glass,  
 not pressed.

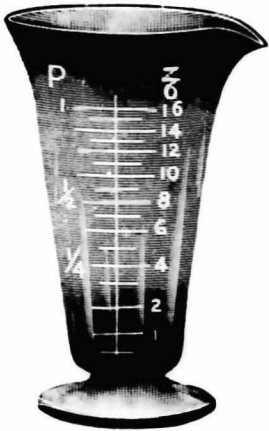
Prices for special plates for  
 lettering glasses quoted  
 on application.



No. 12. Medicine Blown,  
 Engraved Lines and  
 Figures.



No. 5. Medicine Finished  
 Edge. Pressed Fig.  
 Engraved Lines.  
 1 1/2 in. inside dia., 2 1/4 in. high



No. 11.  
Cone Shape Graduate.  
Single American Scale.  
Pressed Lines & Figures

### Pressed Graduated Ware

Graduation Lines and Figures  
are pressed in the glass  
and are not guaran-  
teed for accuracy.

Lines and figures on No. 11  
Cone Shape Graduate are  
pressed on the inside; on  
all other items on the  
outside.



No. 25.  
Measuring Glass.  
Single American Scale.  
Pressed Lines and  
Figures.

Nos. 1, 2, 3 and 4 Medicine  
can be lettered with your  
name or trade mark if  
desired.  
Write us for other informa-  
tion.



No. 1. Medicine. Finished  
Edge. Pressed Lines  
and Figures.



No. 3. Medicine. Finished  
Edge. Pressed Lines  
and Figures.



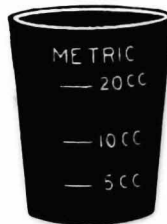
No. 7. Medicine Lipped.  
Finished Edge.  
Pressed Lines and  
Figures.

No. 2. Medicine. Same as  
No. 1 except with Un-  
finished Edge.

No. 4. Medicine. Same as  
No. 1 except with Un-  
finished Edge.



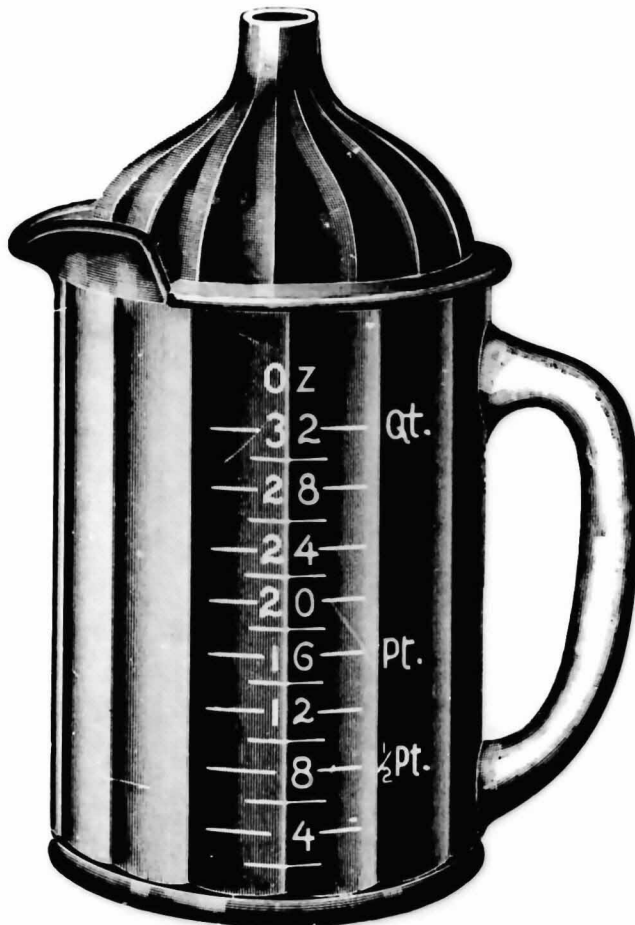
No. 10. Large Medicine.  
Finished Edge. Pressed  
Lines and Figures.



No. 11. Medicine. Finished  
Edge. Pressed Lines  
and Figures.



No. 14. Medicine Footed.  
Finished Edge. Pressed  
Lines and Figures.



No. 2586. Photographers' Measuring Jug, with Glass Funnel Cover.  
Pressed Lines and Figures.

Funnel Furnished with Screw Thread and Perforated Cap  
for Strainer.



No. 3. Alcohol Lamp.  
Ground on Cap.  
Made in 1 and 2 oz.  
capacities.  
Furnished complete with  
Wick and Burner.



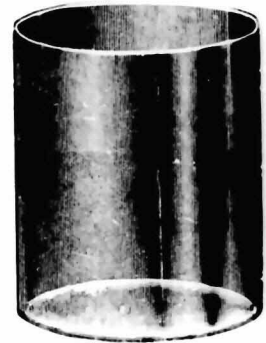
No. 4. Alcohol Lamp.  
Ground on Top.  
Made in 2, 4, 8 oz. capacities.  
Furnished complete with  
Wick and Burner.



No. 2805. Acid Bottle and  
Stopper.  
Made in 1, 1½ and 2½ oz.  
capacities.



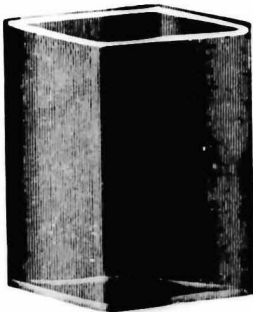
No. 5. Balsam Bottle and  
Cap.  
Cap is ground on and loose.  
Droppers.



No. 24. Battery Jar.  
Furnished either hand-  
made or Iron Mold.



No. 6. Silver Solution  
Actinometer.  
Jar and Actinometer  
put in a wooden  
case.



No. 30. Battery Jar.  
Square Iron Mold.  
Ground Top.



No. 50. Bell Jar.  
Swell Form. Ground Stopper  
and Ground Bottom.

**Hand Made Blown Crystal**



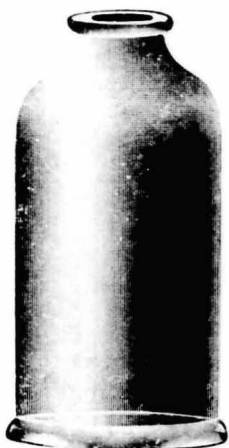
No. 60.  
Bell Jar, Tall Form.  
Ground Stopper and  
Ground Bottom.



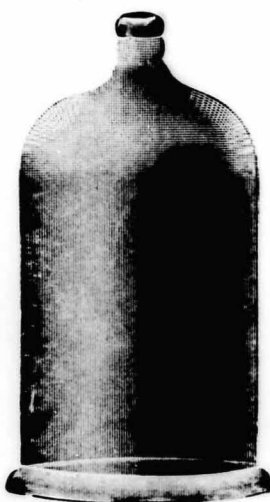
No. 70.  
Bell Jar, No Rim  
Ground Bottom.  
Open for Cap.



No. 80.  
Bell Jar, Swell Form.  
Open Top.  
Ground Bottom.



No. 81. Bell Jar.  
Tall Form. Open Top.  
Ground Bottom.



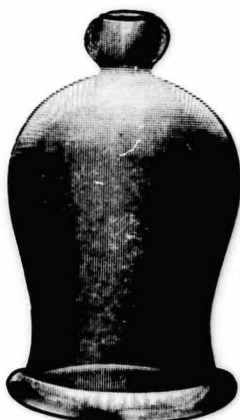
No. 90. Bell Jar.  
Tall Form. Open for Cap.  
Ground Bottom.



No. 91. Bell Jar.  
Tall Form. Ground Bottom.  
Open Top.



No. 100. Bell Jar.  
Low Form. Solid Knob.  
Ground Bottom.



No. 110. Bell Jar.  
Swell Form. Solid Knob.  
Ground Bottom.



No. 120. Bell Jar.  
Tall Form. Solid Knob.  
Ground Bottom.



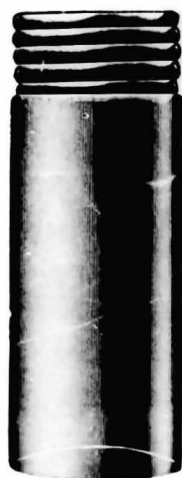
Chiropodist's Collodion  
Bottle.

Ground in Stopper.  
4 oz. capacity.

This bottle has a special  
flange inside neck to wipe  
brush on and prevents liquid  
gumming around stopper.



No. 150. Condiment Jar.  
Made only in 12 oz.  
Same price as No. 100.

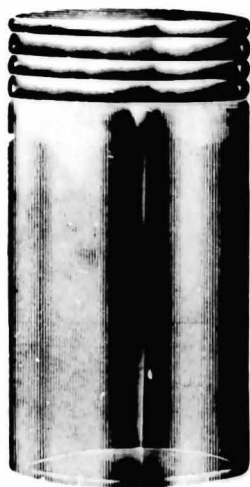


No. 400. Condiment Jar.  
Extra Tall. Made in 4 oz.  
Capacity Only.

### Blown Condiment, Preserve or Candy Jars

Can be furnished with Cork  
Lined or Paper Lined Caps.

All Jars take the same  
price.



No. 100. Cond. Jar.  
Made in  $\frac{3}{4}$ , 1, 2, 4, 6, 8, 12,  
16, 32 oz. capacities.



No. 175. Condiment Jar.  
Same price as No. 100.  
Made in 4, 8, 12 oz.  
Capacities.

Ten per cent. will be added to foot of invoices for less than package lots.



No. 1. Bladder Glass.  
Cone Shape.



No. 2. Bladder Glass.  
Bell Shape.



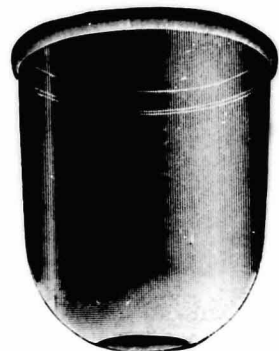
No. 3. Bladder Glass.  
Globe Shape.



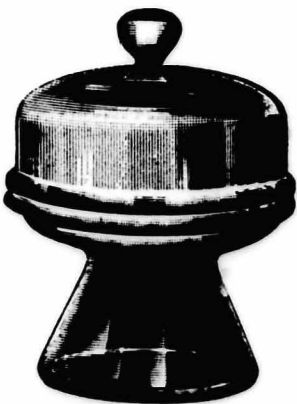
No. 1. Cupping Glass.  
For Bulb.



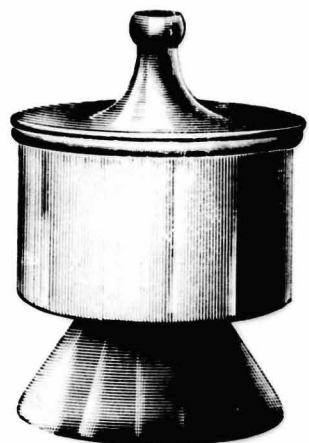
No. 10. Bottle.  
Stopper Hollow and  
Ground in.  
3, 3½ and 4 oz. capacities.



No. 2. Cupping Glass.  
Nesting.



No. 30  
Desiccating Jar.  
"Atwater."  
Hand made.  
Top Ground on

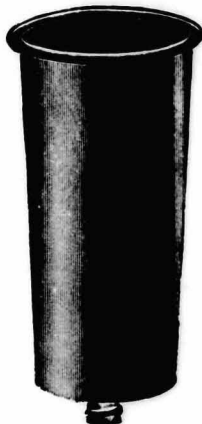


No. 40. Desiccating Jar.  
"Scheibler."  
Hand Made. Top Ground on.

We do not furnish Rubber Tubing.



No. 4. Vaginal Douche.



No. 7. Mead's Douche.

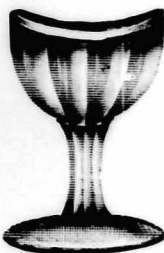


Exhaust Glass.  
No. 1. Dia. Open End 4 in.  
No. 2. Dia. Open End 5 1/4 in.

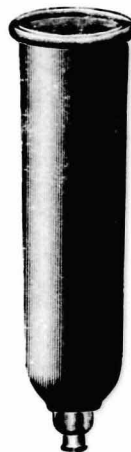
Nos. 1, 2, 3, Exhaust Glass can be furnished with or without Metal Collars.



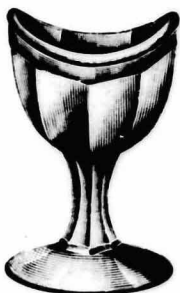
No. 20. Eye Bath.  
Small Size. Plain.  
Height 1 3/4 in.  
Length of Bowl 1 5/8 in.  
Width of Bowl 1 1/4 in.



No. 30. Eye Bath.  
Height 2 1/4 in.  
Width of Bowl 1 1/2 in.  
Length of Bowl 1 1/4 in.



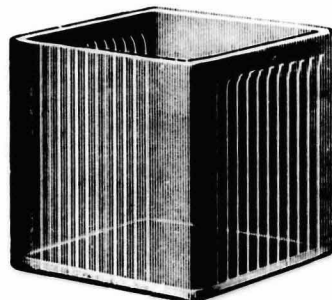
No. 3. Exhaust Glass.  
Dia. Open End 2 1/4 in.



No. 15. Eye Bath.  
Standard Size.  
Height 2 3/4 in.  
Width of Bowl 1 1/2 in.  
Length of Bowl 1 3/4 in.



No. 2832.  
Chalk Bottle and Dropper.

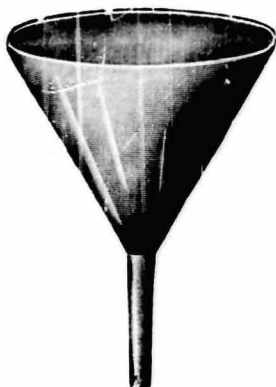


5x7 Fixing Box.  
Can also be used for 4x5 Plates.

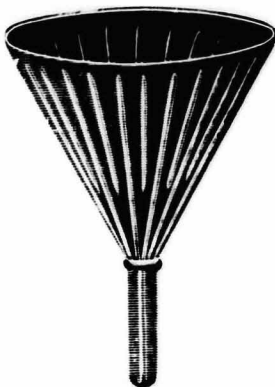
No. 25. Eye Bath.  
Small Size.  
Height 2 5/8 in.  
Length of Bowl 1 1/4 in.

Ten per cent. will be added to foot of invoices for less than package lots.

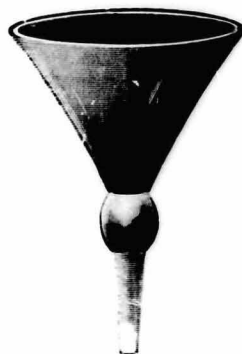




Funnels.  
Pressed Plain Funnels,  
and  
Plain hand made.



Funnel.  
Pressed Ribbed.



Funnels.  
Bulb Stem. Hand  
made.

Be sure to state which  
is wanted.

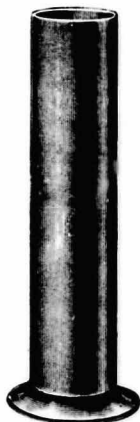
For sizes of Funnels  
see price list.



Nos. 1 and 2. Handy Funnel. Pressed.

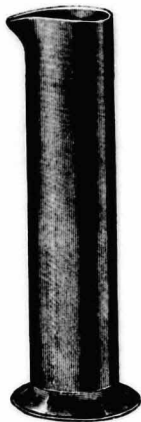


Nos. 1 and 2. Silver  
Solution Hydrometer  
Jar or Milk Test Tube.



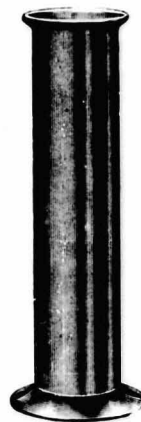
No. 1. Hydrometer Jar.  
Footed.  
Plain Top.

**Hand  
Blown  
Crystal**



No. 2. Hydrometer Jar.  
Footed and  
Lipped.

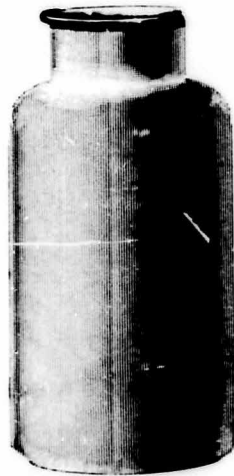
**We can  
supply special  
sizes**



No. 3. Hydrometer Jar.  
Footed. Ground Rim.  
Also furnished with plain Rim

Ten per cent. will be added to foot of invoices for less than package lots.

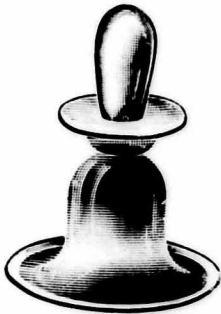
Infusion  
Bottle.  
Kelly Nos. 1  
and 2.  
For illustration  
see under  
engraved  
ware.



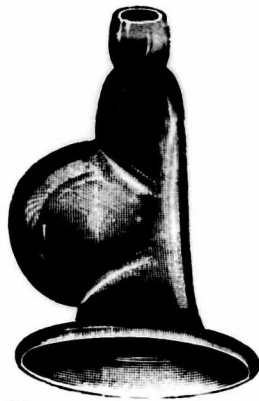
Leyden Jar.  
Hand Blown.



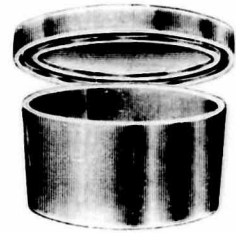
No. 3. Mortars and Pestles.  
Heavy Pressed.



No. 1. Nipple Shield.  
Glass only.



No. 17. Breast Pump.



Nos. 0, 1, 2.  
Preparation Jar or  
Stender Dish.  
Covers ground on.



No. 1.

PASCALE VASE.



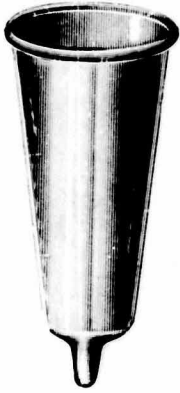
No. 2.



No. 3.



No. 3.  
Preparation Jar or  
Stender Dish.  
Covers ground on.



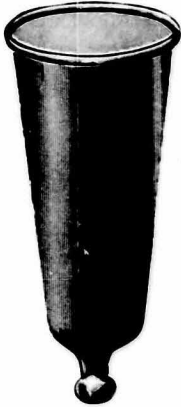
Hand Made Blown.  
No. 1. Percolator.  
Cone Shape.



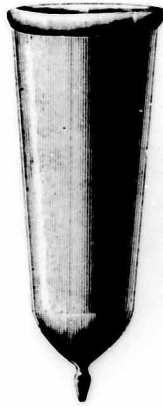
Hand Made Blown.  
No. 2. Percolator.  
Cylinder or "Oldberg" Shape



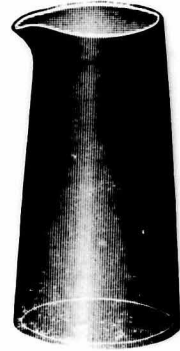
No. 3. Percolator.  
Cone Shaped.  
Pressed.



Hand Made Blown.  
No. 4. Percolator.  
Bulb End for  
Rubber Tubing.



Hand Made Blown.  
No. 5. Percolator.  
Made to fit  
 $\frac{1}{4}$  in. Tubing.



No. 34. Blown  
Precipitating Jar.

**PRESERVE JARS**  
See Page 12

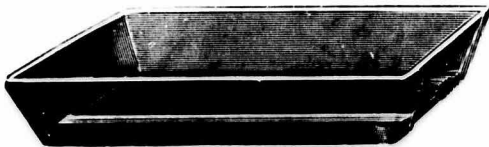


Photo Tray. All Sizes.



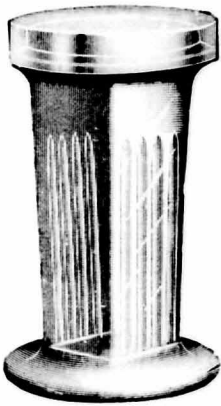
No. 2. Proof Glass.



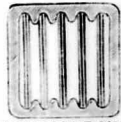
Reagent Bottle Cap.  
For sizes see price list.



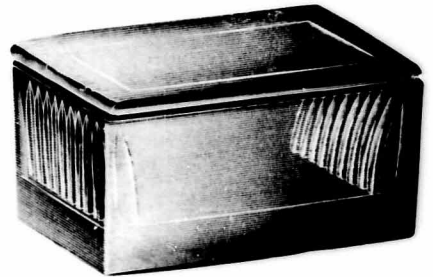
No. 10. Scale Feet or Balance Rest.



Coplin Staining Jar.  
With Glass Lid ground on shoulder.  
For use in staining sections for microscopic work.  
For ten slides.



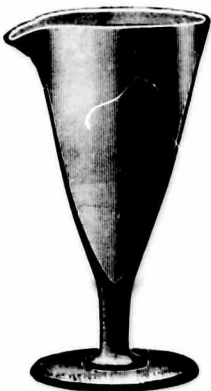
CROSS-SECTION  
SHOWING SLIDES  
IN POSITION



Slide Box and Cover.  
For use in staining sections for microscopic work.

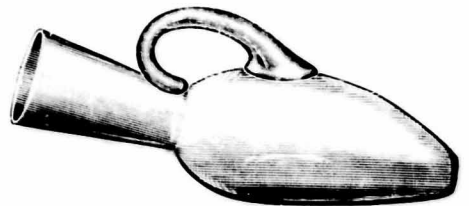


No. 29. Twine Holder.  
Pressed, with metal screw bottoms.



Valentine Receiver  
For illustration see under Engraved Ware.

No. 6. Test Glass.  
For sizes see price list.



No. 30.  
Male and Female Urinal.  
Plain.  
Also make without handle.

## WATCHMAKERS' SUPPLIES



No. 1. Watch Glass.



No. 2. Watch Glass.



No. 3. Watch Glass.

See Description in Price List



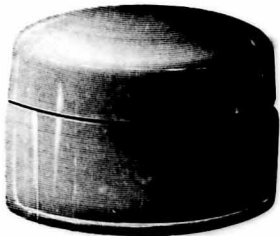
No. 2796.  
Benzine Cup and Cover.  
Capacity 2 oz.



No. 2811. Alcohol Cup.  
Ground on Cover.  
Capacity 12 oz.



No. 2795.  
Benzine Cup and Cover.  
Capacity 4 1/4 oz.



Alcohol Cup and Cover.  
Cover is ground on.  
No. 2803. Capacity 3 oz.  
No. 2804. Capacity 8 oz.



Movement Cover.  
Made in following diameters:  
3 in., 3 1/2 in., 3 3/4 in., 4 in.,  
4 3/4 in., 5 in., 5 1/4 in., 5 1/2 in.

Ten per cent. will be added to foot of invoices for less than package lots.



# PRICE LIST

FOR

## Catalog of Druggists, Chemists, Surgeons, Photographers and Watchmakers' Supplies

Prices are all quoted on package quantities. If ordered less than package quantities add 10 per cent. to price. When original package quantity consists of one barrel the weight per barrel is given. Neither quantity nor weight are guaranteed, but are estimated for your convenience.

### ENGRAVED WARE

#### GRADUATES

Packed separately in paper cartons, each carton printed with kind of graduate and capacity. Blank space left for your name. We are equipped to stamp names on carton at a small extra cost.

Customer's name or trade mark etched upon Graduates at slight cost which will be furnished upon application.

All shapes take the same price and package. Made in Cone, Perfection and Beaker shape.

Single American Scale in Ounces per Doz.	Single Metric Scale in C. C. per Doz.	Double Scale Ounces and C. C. per Doz.	Original Package Quantity Doz.	Weight per Bbl.
1 dr. or 60 m. \$1.30	5 c c \$1.30	\$1.45	60	150
2 dr. or 120 m. 1.40	10 c c 1.45	1.70	50	150
1/2 oz. .85	15 c c 1.10	1.35	40	130
1 oz. .90	30 c c 1.15	1.45	30	120
2 oz. 1.05	60 c c 1.20	1.70	16	120
3 oz. 1.15	100 c c 1.30	2.05	12	100
4 oz. 1.30	125 c c 1.60	2.20	7	90
6 oz. 1.60	200 c c 1.95	2.50	6	80
8 oz. 1.95	250 c c 2.40	3.35	4 1/2	80
12 oz. 2.60	375 c c 3.10	4.40	3	80
16 oz. 3.10	500 c c 3.75	5.00	2	100
32 oz. 5.50	1000 c c 6.55	8.35	1	100

	Per Doz.		
1 oz. Special Graduate, Eng. to 120 M. and 1 oz.	\$2.90	18	140
5 pint Jug, Graduated up to 5 pints	5.40	1 1/2	120
Male Urinal Graduate, Handled*	3.75	3	100
Male Urinal Graduate, No Handle*	3.45	3 1/2	100
Female Urinal Graduate, Handled*	3.75	3	100
Female Urinal Graduate, No Handle*	3.45	3 1/2	100
Valentine Receiver*	4.60	3	110
Nos. 1 and 2 Kelly Infusion Bottle, Graduated*	4.70	2 1/2	100
Fowler Infusion Bottle, Graduated 60 oz.	9.00	1 1/2	120

Items marked \* can be furnished plain. See plain price list.

#### PERCOLATING JARS

Graduated as follows:

Single American Scale in Ounces per Doz.	Single Metric Scale in C. C. per Doz.	Double Scale Ounces and C. C. per Doz.	Original Package Quantity Doz.	Weight per Bbl.
16 oz. \$ 4.15	500 c c \$ 5.00	16 oz. and 500 c c \$ 6.45	4	110
32 oz. 4.85	1000 c c 5.50	32 oz. and 1000 c c 7.40	2 1/2	100
1/2 Gal. 7.80	2000 c c 8.25	1/2 Gal. and 2000 c c 10.80	1 1/2	90
1 Gal. 12.60	4000 c c 13.75	1 Gal. and 4000 c c 18.35	5-6	80
2 Gal. 19.25	8000 c c 21.55	2 Gal. and 8000 c c 23.85	1-3	70
Milk Test Jar, Graduated 0-30			3.20	2 1/2
Milk Test Jar, Graduated 0-90			3.40	5

Ten per cent. will be added to foot of invoices for less than package lots.

Catalog Page

5

6

7

No. 30

Catalog  
Page**CYLINDERS GRADUATED ON FOOT**

Graduated as follows:

7	Single American Scale in Ounces per Doz.		Single Metric Scale in C. C. per Doz.		Double Scale Ounces and C. C.		Price Per Doz.	Original Package Quantity Doz.	Weight per Bbl.
	1 oz.	2 oz.	30 c c	60 c c	1 oz. and 30 c c	2 oz. and 60 c c			
	\$ 2.10		\$ 2.50		\$ 3.35		25	130	
	2.50		3.15		3.75		20	120	
	2.70		3.55		4.15		15	110	
	3.35		4.40		5.00		12	100	
	4.20		5.40		6.65		7½	100	
	5.40		6.70		8.35		5	100	
	10.00		12.50		15.00		2¼	90	

**MEDICINE GLASSES**

	Bulk per Gross	Boxed per Gross	Original Package Quantity Doz.	Weight per Bbl.
No. 5. Finished Edge, Engraved Lines and Pressed Figures, showing 8 Tea and 2 Tablespoons (1½ in. inside diameter, 2½ in. high.)	\$ 5.00	\$ 5.50	85	150
No. 6. Finished Edge, Engraved Lines, Pressed Figures, showing Tea, Desert and Tablespoon—	4.00	4.50	85	150
No. 12. Blown, Engraved Lines and Figures, showing 8 Tea and 2 Tablespoons—	9.55	10.50	100	150
No. 13. Finished Edge, Engraved Lines and Pressed Figures, showing 8 Tea and 3 Tablespoons (1¾ in. inside diameter, 2½ in. high.)	5.30	5.80	80	150

Medicine Glasses can be lettered with your name. Write us for prices on this work, submitting a sketch or design of your requirements.

**PRESSED GRADUATED WARE**

8

Graduation Lines and Figures are Pressed in the Glass,

No. 11. GRADUATE, and are not guaranteed for accuracy.

Cone Shape.

(Lines and figures pressed on the inside.)

	Price Per Gross	Original Package Quantity Doz.	Weight per Bbl.
1 oz. Single American Scale, packed one in a carton—	\$ 7.42	30	140
2 oz. Single American Scale, packed one in a carton—	8.91	12	140
4 oz. Single American Scale, packed one in a carton—	11.11	7	140
8 oz. Single American Scale, packed one in a carton—	14.85	4½	130
16 oz. Single American Scale, packed one in a carton—	22.27	2	130
32 oz. Single American Scale, packed one in a carton—	33.00		

**No. 25 MEASURING GLASS**

Lines and Figures Pressed on the Outside.

	Price Per Gross	Original Package Quantity Doz.	Weight per Bbl.
2 oz. Single American Scale—	\$ 4.34	55	160
4 oz. Single American Scale—	5.55	24	150
8 oz. Single American Scale—	7.04	12	140
16 oz. Single American Scale—	13.75	5	125
32 oz. Single American Scale—	21.67	3	100

us for prices.

**MEDICINE GLASSES**

Pressed Lines and Figures.

	Bulk per Gross	Boxed per Gross	Original Package Quantity Doz.	Weight per Bbl.
No. 1. Finished Edge, showing 8 Tea and 2 Tablespoons—	\$3.10	\$3.75	85	150
No. 2. Same as No. 1 only Unfinished Edge—	2.20	2.70	85	150
No. 3. Finished Edge, showing Tea, Desert and Tablesp'ns	3.10	3.75	125	150
No. 4. Same as No. 3 only Unfinished Edge—	2.20	2.70	125	150
No. 7. Finished Edge Lipped, 8 Tea and 2 Tablespoons—	3.10	3.75	85	150
No. 10. Finished Edge, showing 4 Table and 8 Teaspoons—	5.00	5.50	75	150
No. 11. Finished Edge, Metric Figures showing 5-10-20 c c.	2.50	2.75	125	150
No. 14. Finished Edge, Ftd., showing 8 Tea and 2 Tablespoons—	3.75	4.40	60	150

Medicine Glasses can be lettered with your name. Write us for prices on this work, submitting a sketch or design of your requirements.

9

**MEASURING JUG**

Measuring Jug, No. 2586 (Glass Funnel Cover & Strainer) per Doz.	\$2.50	3	135
Measuring Jug, No. 2586 No Cover—	per Doz. 2.15	3½	135

Ten per cent. will be added to foot of invoices for less than package lots.



**ALCOHOL LAMPS**

**With Ground On Caps**

	Bulk per Doz.	Boxed per Doz.	Original Package Quantity	Weight per Bbl.
No. 4. 2 oz. Capacity	\$.75	\$.85	25	130
4 oz. Capacity	.95	1.05	16	120
8 oz. Capacity	1.40	1.60	9	110
No. 5. 1 oz. Capacity	.65	.70	45	140
2 oz. Capacity	.75	.85	25	130
Caps Only, Not Ground			\$1.90 per Gross	

**ACID BOTTLE**

	Price Per Doz.	Original Package Quantity Doz.	Weight per Bbl.
1 oz. Capacity, Dropper Ground in, No. 2805	\$.88	50	150
1½ oz. Capacity, Dropper Ground in, No. 2806	1.10	40	150
2½ oz. Capacity, Dropper Ground in, No. 2894	1.25	30	150

**ACTINOMETER**

Silver Solution Actinometer, packed separately in wooden case	\$1.90	20	120
---	--------	----	-----

**BALSAM BOTTLE**

**With Ground On Cap**

	Price Per Doz.	Original Package Quantity Doz.	Weight per Bbl.
1½ oz. Capacity and Cap, No Dropper	\$.85	20	120
Dropper Only	<del>1.00</del>		

**BATTERY JARS**

**No. 24**

	Price Per Doz.	Original Package Quantity Doz.	Weight per Bbl.
4 x4 Round Hand Made, Capacity 29 oz.	\$ 1.65	5	110
4½x4½ Round Hand Made, Capacity 39 oz.	1.85	4	110
4 x5 Round Hand Made, Capacity 36 oz.	2.05	4	110
4½x5 Round Hand Made, Capacity 45 oz.	2.05	3½	110
5 x6 Round Hand Made, Capacity 64 oz.	2.65	3	100
5 x7 Round Hand Made, Capacity 74 oz.	3.10	2½	100
5 x11 Round Hand Made, Capacity 122 oz.	3.95	1½	100
6 x8 Round Hand Made, Capacity 128 oz.	3.70	2	100
7 x9 Round Hand Made, Capacity 224 oz.	4.70	1½	80
8½x12 Round Hand Made, Capacity 384 oz.	7.00	1	80
9 x12 Round Hand Made, Capacity 448 oz.	9.30	2-3	60
9 x15 Round Hand Made, Capacity 512 oz.	10.85	½	60

**No. 40**

	Price Per Doz.	Original Package Quantity Doz.	Weight per Bbl.
4½x5 Round Iron Mold, Ground Top, Capacity 39 oz.	\$ 1.00	5	110
4½x6 Round Iron Mold, Ground Top, Capacity 44 oz.	1.45	4	110
5 x7 Round Iron Mold, Ground Top, Capacity 74 oz.	1.75	3½	100
6 x8 Round Iron Mold, Ground Top, Capacity 128 oz.	2.25	3	90

**No. 30**

Dimen	Height		Price Per Doz.	Original Package Quantity Doz.	Weight per Bbl.
3½x3½x5		Iron Mold, Ground Top, Capacity 27 oz.	\$ 1.20	4	110
4 x4 x8		Iron Mold, Ground Top, Capacity 57 oz.	1.70	4	110
2½x4¼x7		Iron Mold, Ground Top, Capacity 32 oz.	1.60	4	110
2½x4¼x6		Iron Mold, Ground Top, Capacity 30 oz.	1.60	4	110
4 x4 x4		Iron Mold, Ground Top, Capacity 29 oz.	1.20	4	110

**BELL JARS**

We can make special sizes of Bell Jars. Send us dimensions and description of your requirements and we will quote prices.

	No. 50	No. 60	Price Per Doz.	Original Package Quantity Doz.	Weight per Bbl.
1 pt. 3 x5	3 x6	Ground Stopper, Ground Bottom	\$ 3.75	3	110
1 qt. 4 x6½	4 x8	Ground Stopper, Ground Bottom	4.95	2	100
½gal. 5 x8	5 x9	Ground Stopper, Ground Bottom	5.95	1½	80
1 gal. 6 x10	6 x11	Ground Stopper, Ground Bottom	7.45	1	80
2 gal. 7 x12	7 x15	Ground Stopper, Ground Bottom	9.40	½	70
3 gal. 8½x13	8½x15	Ground Stopper, Ground Bottom	15.15	1-3	70
5 gal. 10 x16	10 x18	Ground Stopper, Ground Bottom	33.65	1-6	60

Deduct 90c per dozen if required without Stoppers.

**Catalog Page 11 BELL JARS (continued)**

The following Jars take the same prices and package:

**All Open Top.**

	No. 70	No. 80	No. 81	No. 90	No. 91	No. 110	Price Per Doz.	Original Package Quantity Doz.	Weight per Bbl.
	Inside Dia. Inside Height	Inside Dia. Inside Height	Inside Dia. Inside Height	Inside Dia. Inside Height	Inside Dia. Inside Height	Inside Dia. Inside Height			
1 pt.	3 x6	3 x5	3 x6	3 x6	3 x6	3 x5	\$ 3.25	3	110
1 qt.	4 x9	4 x6½	4 x8	4 x8	4 x8	4 x6½	4.20	2	110
½ gal.	5 x9	5 x8	5 x9	5 x9	5 x9	5 x8	5.45	1½	100
1 gal.	6 x11	6 x10	6½x11	6½x11	6½x11	6 x10	7.20	1	90
2 gal.	7 x15	7 x12	7 x15	7 x15	7 x15	7 x12	9.40	½	80
3 gal.	8½x15	8½x15	8½x15	8½x15	8½x15	8½x13	12.05	1-3	70
5 gal.	10 x18	10 x16	10 x18	10 x18	10 x18	10 x16	32.10	1-6	60

**No. 100**

Inside Dia. Inside Height		Low Form	Price Per Doz.	Original Package Quantity Doz.	Weight per Bbl.
3x1½	Solid Knob, Ground Bottom		\$ 2.40	8	120
4x2¼	Solid Knob, Ground Bottom		2.70	6	120
5x3½	Solid Knob, Ground Bottom		3.95	4	120
6x4	Solid Knob, Ground Bottom		5.60	3	110
7x4½	Solid Knob, Ground Bottom		6.70	3	100
8x5	Solid Knob, Ground Bottom		7.85	1¼	90
9x6	Solid Knob, Ground Bottom		8.90	1	80
10x8	Solid Knob, Ground Bottom		11.15	2-3	70
12x10	Solid Knob, Ground Bottom		16.05	½	60
16x11	Solid Knob, Ground Bottom		24.30	1-6	60

**No. 120**

Inside Dia. Inside Height		Tall Form	Price Per Doz.	Original Package Quantity Doz.	Weight per Bbl.
1 pt.	3 x6	Solid Knob, Ground Bottom	\$ 3.25	3	120
1 qt.	4 x8	Solid Knob, Ground Bottom	4.20	2	120
½ gal.	5 x9	Solid Knob, Ground Bottom	5.45	1½	110
1 gal.	6 x11	Solid Knob, Ground Bottom	7.20	1	110
1½ gal.	6½x14	Solid Knob, Ground Bottom	7.70	¾	100
2 gal.	7 x15	Solid Knob, Ground Bottom	9.40	½	100
2 gal.	8 x13	Solid Knob, Ground Bottom	9.90	5½	100
2½ gal.	8 x15	Solid Knob, Ground Bottom	10.40	1-3	90
3 gal.	8½x15	Solid Knob, Ground Bottom	12.05	1-3	80
3½ gal.	8½x17	Solid Knob, Ground Bottom	14.05	¾	70
4 gal.	9 x18	Solid Knob, Ground Bottom	16.85	1-6	70
4½ gal.	9½x18	Solid Knob, Ground Bottom	22.75	1-6	60
5 gal.	10 x18	Solid Knob, Ground Bottom	32.10	1-6	60

**13**
**BLADDER GLASSES**

No.	Description	Price Per Doz.	Original Package Quantity Doz.	Weight per Bbl.
No. 1.	Cone Shape, Inside Dia. Large End 4½ in., Height 6 in.	\$6.75	4	110
No. 2.	Bell Shape, Small, Inside Dia. Large End 3½ in., Height 4 in.	6.75	4	110
No. 2.	Bell Shape, Large, In. Dia. Large End 3½ in., Height 5 in.	6.75	4	110
No. 3.	Globe Shape, Inside Dia. Large End 4½ in., Height 4 in.	6.75	4	110

We are equipped to make any size or shape. Write us your requirements.

**BOTTLES No. 10**

Bottle 3 oz. Capacity, Ground in Stopper	\$1.00	24	130
Bottle 3½ oz. Capacity, Ground in Stopper	1.25	18	130
Bottle 4 oz. Capacity, Ground in Stopper	1.30	18	130

**CHIROPODIST'S COLLODION BOTTLE, Ground in Stopper,**  
 Capacity 4 oz. \$2.00 18 130

This bottle has a special flange inside neck to wipe brush on and prevents liquid gumming around stopper.

Ten per cent. will be added to foot of invoices for less than package lots.

**CONDIMENT, CANDY OR PRESERVE JARS BLOWN**

	Nickel Plated Zinc Cap Paper Liner per Gross	Nickel Plated Zinc Cap Cork Liner per Gross	Polished Tin Cap Paper Liner per Gross	Original Package Quantity	Weight per Bbl
¾ ounce	\$ 2.90	\$ 3.00	\$ 2.50	120	125
1 ounce	3.25	3.40	2.80	100	125
2 ounce	4.00	4.20	3.45	60	110
4 ounce	4.70	5.00	4.15	36	110
4 ounce extra Tall	4.70	5.00	4.15	36	110
6 ounce	6.15	6.40	5.50	31	100
8 ounce	6.80	7.20	5.95	18	100
12 ounce	8.95	9.65	7.50	12	100
16 ounce	9.90	10.55	8.75	6	90
32 ounce	13.00	14.00	11.25	4	90

Aluminum Caps same price as Nickel Plated Zinc.

**CUPPING GLASSES**

**No. 1**

	Price Per Gross	Original Package Quantity Doz.
Inside Dia. ½ in., Outside Dia. ¾ in. for Bulb	\$ 4.95	18
Inside Dia. ¾ in., Outside Dia. 1 in. for Bulb	3.45	18
Inside Dia. 1 in., Outside Dia. 1¼ in. for Bulb	3.75	18
Inside Dia. 1¼ in., Outside Dia. 1½ in. for Bulb	4.20	18
Inside Dia. 1½ in., Outside Dia. 1¾ in. for Bulb	4.70	18
Inside Dia. 1¾ in., Outside Dia. 2 in. for Bulb	4.95	18
Inside Dia. 2 in., Outside Dia. 2¼ in. for Bulb	5.35	18

**No. 2**

	Price Per Gross	Original Package Quantity Doz.
1¼ in. Inside Dia. Nesting	\$ 4.35	18
1½ in. Inside Dia. Nesting	4.85	18
1¾ in. Inside Dia. Nesting	5.40	18
2¾ in. Inside Dia. Nesting	5.95	18

**DESICCATING JARS**

**No. 30. Atwater Hand Made.**

	Price Per Doz.	Original Package Quantity Doz.	Weight per Bbl.
4½ in. Inside Dia., Top Ground on	\$ 15.00	1½	100

**No. 40. Schreiber Hand Made.**

	Price Per Doz.	Original Package Quantity Doz.	Weight per Bbl.
4 in. Inside Dia., Top Ground on	\$ 5.50	2	110
6 in. Inside Dia., Top Ground on	7.50	1-1-3	100

**DOUCHE**

	Price Per Gross	Original Package Quantity Doz.	Weight per Bbl.
Mead's, Glass Only, No. 7	\$ 9.00	15	130
Mead's, with Metal Collar, No. 7	12.00	15	130
Vaginal, No. 4	12.00	30	160

**EXHAUST GLASSES**

	Per Gross with Metal Caps	Per Gross Glass Only	Original Package Quantity Doz.	Weight per Bbl.
No. 1. Dia. of Open End 4 inches	<del>22.50</del> <sup>27.25</sup>	\$ 18.75	12	130
No. 2. Dia. of Open End 5¼ inches	<del>22.50</del> <sup>27.25</sup>	18.75	8	120
No. 3. Dia. of Open End 2¼ inches	<del>20.00</del> <sup>24.75</sup>	17.00	8	120

**EYE BATHS**

Made in Blue, Crystal, Green and Amber.

	Height	Length of Bowl	Width of Bowl	Per Gross Boxed	Per Gross Bulk	Original Package Quantity Doz.	Weight per Bbl.
No. 15	2¾	1¾	1½	\$ 3.00	\$ 2.70	100	150
No. 20	1¾	1¾	1¼	3.00	2.70	120	150
No. 25	2¾	1½	1¾	3.00	2.70	120	150
No. 30	2¼	1¼	1½	3.00	2.70	120	150

Customer's name or trade mark in foot if desired. Write for information.

Ten per cent. will be added to foot of invoices for less than package lots.

Catalog  
Page

14

No. 2832

	Price Per Doz.	Original Package Quantity Doz.	Weight per Bbl.
CHALK BOTTLE, Ground Top, Ground in Dropper.....	\$ .88	20	120

**FIXING BOXES**

	Price Per Doz.	Original Package Quantity Doz.	Weight per Bbl.
5x7, will take 4x5 Plate.....	\$ 9.75	1	110

15

**FUNNELS—PLAIN PRESSED—FULL FINISHED**

	Price Per Doz.	Original Package Quantity Doz.	Weight per Bbl.
1 oz. Pressed Plain, Dia. 2½ in.....	\$ .45	25	100
2 oz. Pressed Plain, Dia. 2¾ in.....	.50	15	100
4 oz. Pressed Plain, Dia. 3¾ in.....	.55	10	90
8 oz. Pressed Plain, Dia. 4¾ in.....	.70	7	75
16 oz. Pressed Plain, Dia. 5¾ in.....	.95	3	75
32 oz. Pressed Plain, Dia. 7¼ in.....	1.30	2	75
½ Gal. Pressed Plain, Dia. 8¾ in.....	2.05	1½	75
1 Gal. Pressed Plain, Dia. 10¼ in.....	3.10	5-6	75
2 Gal. Pressed Plain, Dia. 13 in.....	6.75	1-3	70

**FUNNELS—PRESSED RIBBED**

	Unfinished Price per Doz.	Finished Price per Doz.		
1 oz. Pressed Ribbed, Dia. 2½ in.....	\$ .40	\$ .45	25	100
2 oz. Pressed Ribbed, Dia. 2¾ in.....	.45	.50	15	100
4 oz. Pressed Ribbed, Dia. 3¾ in.....	.55	.60	10	100
8 oz. Pressed Ribbed, Dia. 4¾ in.....	.70	.75	7	90
16 oz. Pressed Ribbed, Dia. 5¾ in.....	.90	.95	3	90
32 oz. Pressed Ribbed, Dia. 7¼ in.....	1.20	1.25	2	90
½ Gal. Pressed Ribbed, Dia. 8¾ in.....	1.45	1.50	1½	90
1 Gal. Pressed Ribbed, Dia. 10¼ in.....	2.60	2.65	5-6	90
2 Gal. Pressed Ribbed, Dia. 13 in.....	4.95	5.00	1-3	90

**FUNNELS—PLAIN HAND MADE—FULL FINISHED.**

1 oz. Plain Hand Made, Dia. 2 in.....	\$ 1.05	25	100
2 oz. Plain Hand Made, Dia. 2½ in.....	1.10	15	100
4 oz. Plain Hand Made, Dia. 3½ in.....	1.25	10	100
8 oz. Plain Hand Made, Dia. 4½ in.....	1.65	7	100
16 oz. Plain Hand Made, Dia. 5½ in.....	1.90	3	100
32 oz. Plain Hand Made, Dia. 7 in.....	2.80	2	100
½ Gal. Plain Hand Made, Dia. 8½ in.....	4.20	1½	100
1 Gal. Plain Hand Made, Dia. 10½ in.....	6.55	5-6	100
2 Gal. Plain Hand Made, Dia. 13 in.....	9.40	1-3	100

**FUNNELS—BULB STEM—HAND MADE—FULL FINISHED.**

4 oz. Bulb Stem, Hand Made, Dia. 3½ in.....	\$ 1.90	10	100
8 oz. Bulb Stem, Hand Made, Dia. 4½ in.....	2.60	7	100
16 oz. Bulb Stem, Hand Made, Dia. 5½ in.....	3.10	3	90
32 oz. Bulb Stem, Hand Made, Dia. 7 in.....	3.40	2	90
½ Gal. Bulb Stem, Hand Made, Dia. 8 in.....	5.85	1½	90
1 Gal. Bulb Stem, Hand Made, Dia. 8 in.....	9.00	1	90

**FUNNELS—HANDY—PRESSED—FULL FINISHED.**

No. 1. Handy Funnel, Capacity 2 oz., Dia. 2¼ in.....	\$ .34	60	150
No. 2. Handy Funnel, Capacity 4 oz., Dia. 2¾ in.....	.46	40	120

**HYDROMETER****Silver Solution or Milk Test Tube**

	Price Per Gross	Package Quantity
No. 1. 1½x6½ inches.....	\$ 6.00	2
No. 2. 1 x5 inches.....	6.00	2

Ten per cent. will be added to foot of invoices for less than package lots.

<b>HYDROMETER JARS.</b>		<b>Nos. 1 and 2</b>	<b>No. 3</b>	<b>Original</b>	<b>Weight</b>
Footed, Hand Made, Seamless.		Price per Doz.	Ground Rim per Doz.	Package Quantity Doz.	per Bbl.
5x1 inches		\$ 1.45	\$ 1.60	6	
6x1 inches		1.55	1.70	6	
6x1¼ inches		1.70	1.85	6	
7x1¼ inches		1.80	1.95	4	
8x1½ inches		2.00	2.10	4	
8x2 inches		2.10	2.25	4	
8x2¼ inches		2.60	2.75	4	
10x1 inches		2.50	2.60	3	
10x1½ inches		2.55	2.65	3	
10x2 inches		2.60	2.75	3	
10x2½ inches		3.10	3.30	3	
12x1½ inches		2.70	2.85	2	
12x2 inches		2.70	2.85	2	
12x2½ inches		3.35	3.55	2	
12x3 inches		3.60	3.80	2½	90
15x1½ inches		3.40	3.60		
15x2 inches		3.40	3.60	2½	90
15x2½ inches		4.10	4.40	2½	90
15x3 inches		5.15	5.45	1¾	90
16x2 inches		4.10	4.40	2	90
16x2½ inches		4.65	4.90	2	90
18x1½ inches		6.50	6.50		
18x2 inches		4.65	4.90	1 5-6	80
18x2½ inches		6.20	6.50	1½	80
18x3 inches		6.70	7.00	1	80
20x2 inches		6.20	6.50	1	80
20x2½ inches		7.20	7.50	1	80
20x3 inches		8.25	8.55	1	80
24x3 inches		11.35	11.65	1	80

No. 3 without ground rim takes same price as Nos. 1 and 2.  
SPECIAL SIZES MADE IF WANTED.

<b>INFUSION BOTTLE</b>	Price Doz. Per	Original Package Quantity Doz.	Weight per Lb.
Infusion Bottle, Kelly, Plain, Nos. 1 and 2	\$ 3.35	2½	100

<b>LEYDEN JARS OR PERCOLATING JARS</b>	Price Per Doz.	Original Package Quantity Doz.	Weight per Bbl.
½ pint	\$ 2.10	12	120
1 pint	2.65	4	100
1 quart	3.00	3	90
½ gallon	3.65	1½	80
1 gallon	4.75	5-6	80
2 gallon	6.00	1-3	80
3 gallon	11.00	1	80

<b>MORTARS AND PESTLES</b>	Mortor Only per Doz.	Pestle Only per Doz.	Complete per Doz.	Original Package Quantity Doz.	Weight per Bbl.
1 ounce	\$ .55	\$ .45	\$ .85	24	200
2 ounce	.70	.45	.95	18	180
4 ounce	1.00	.65	1.40	12	180
8 ounce	1.30	.70	1.70	10	180
16 ounce	2.55	.85	2.80	5	160
32 ounce	3.65	1.40	4.20	2½	150

<b>NIPPLE SHIELD, Glass only</b>	Price Per Doz.	Original Package Quantity Doz.	Weight per Bbl.
NIPPLE SHIELD, Glass only	\$ .30	120	150

<b>PASCALE VASE, Nos. 1, 2 and 3</b>	Price Per Doz.	Original Package Quantity Doz.	Weight per Bbl.
PASCALE VASE, Nos. 1, 2 and 3	1.95	2	

<b>PREPARATION JARS OR STENDER DISHES</b>		Price Per Doz.	Package Quantity Doz.	Weight per Bbl.
Covers Grooved and Ground in.				
No. 0. Dia. 1¾ in., Height ¾ in.		\$ .50	12	
No. 1. Dia. 2 in., Height 1 in.		.65	12	
No. 2. Dia. 2¾ in., Height 1½ in.		.90	12	
No. 3. Dia. 2¾ in., Height 3½ in.		.90	12	

<b>No. 17</b>	Per Gross	Original Package Quantity Doz.	Weight per Bbl.
<b>BREAST PUMP</b>	\$ 6.50	36	120

Ten per cent. will be added to foot of invoices for less than package lots.

Catalog  
Page

17

**PERCOLATORS****No. 1. Cone Shape, Blown. Hand Made.**

	Price Per Doz.	Original Package Quantity Doz.	Weight per Bbl.
8 ounce Cone Shape, Blown	\$ 1.75	8	120
16 ounce Cone Shape, Blown	2.10	6	120
32 ounce Cone Shape, Blown	2.50	3	110
1/2 gallon Cone Shape, Blown	3.40	1 1-3	110
1 gallon Cone Shape, Blown	4.50	5-6	100
1 1/2 gallon Cone Shape, Blown	6.70	5-12	100
2 gallon Cone Shape, Blown	9.00	1-3	90
3 gallon Cone Shape, Blown	15.60	1-6	80
4 gallon Cone Shape, Blown	22.00	1-6	70
5 gallon Cone Shape, Blown	30.00	1-6	60

**No. 2. Cylinder or "Oldberg" Blown. Hand Made.**

	Price Per Doz.	Original Package Quantity Doz.	Weight per Bbl.
1/4 pint Cylinder or "Oldberg" Blown	\$ 1.70	10	120
1/2 pint Cylinder or "Oldberg" Blown	1.80	8	120
1 pint Cylinder or "Oldberg" Blown	2.05	6	110
1 1/2 pint Cylinder or "Oldberg" Blown	2.50	3 1/2	110
2 pint Cylinder or "Oldberg" Blown	3.10	2 2-3	100
2 1/2 pint Cylinder or "Oldberg" Blown	3.65	2 1/2	100
1/2 gallon Cylinder or "Oldberg" Blown	4.30	1 1/2	90
3/4 gallon Cylinder or "Oldberg" Blown	4.72	1	80
1 gallon Cylinder or "Oldberg" Blown	7.00	2-3	70
1 1/2 gallon Cylinder or "Oldberg" Blown	7.90	1 1/2	70
2 gallon Cylinder or "Oldberg" Blown	13.50	1-3	60
3 gallon Cylinder or "Oldberg" Blown	18.00	1 1/4	50

**No. 3. Cone Shape, Pressed.**

	Price Per Doz.	Original Package Quantity Doz.	Weight per Bbl.
1 pint	\$ 1.05	4 1/2	130
2 pint	1.30	2 1/2	120
1/2 gallon	2.10	1 1/2	110
1 gallon	3.10	5-6	100

**No. 4. Bulb End. Hand Made. Blown.****No. 5. Made to Fit 1/4 inch Tubing. Hand Made. Blown.**

Both take the following prices:

	Price Per Doz.	Original Package Quantity Doz.	Weight per Bbl.
8 ounce	\$ 1.90	8	120
16 ounce	2.30	6	120
32 ounce	2.75	3	110
1/2 gallon	3.75	1 1-3	110
1 gallon	4.95	5-6	100
1 1/2 gallon	7.35	5-12	90
2 gallon	9.90	1-3	80
3 gallon	17.15	1-6	70
4 gallon	24.20	1-6	60
5 gallon	33.00	1-6	60

**PRECIPITATING JARS, No. 34****Blown.**

	Price Per Doz.	Original Package Quantity Doz.	Weight per Bbl.
1/4 pint	\$1.60	25	150
1/2 pint	1.80	19	140
1 pint	2.50	7	130
1 quart	3.50	3 1/2	120
1/2 gallon	4.50	1 5-6	100
1 gallon	5.50	1	90
1 1/2 gallon	7.70	2-3	80
2 gallon	9.90	1-3	60
3 gallon	12.50	1-6	60

Ten per cent. will be added to foot of invoices for less than package lots.

**PRESERVE JARS. See Condiment Jars.  
PROOF GLASS No. 2**

	Price Per Doz.	Original Package Quantity Doz.	Weight per Bbl.
5½ inches long	\$ 1.40	36	180
7 inches long	1.70	24	170

17

**PHOTOGRAPHERS' TRAYS  
Made in Crystal, Green or Amber Glass**

	Price Per Doz.	Original Package Quantity Doz.	Weight per Bbl.
4 x6 inches, Postal Card size	\$ .75	11	150
4 x5½ inches	.75	11	150
5½x8½ inches	1.05	5	150
7 x9 inches	1.60	3½	150
8 x10½ inches	2.20	2½	150

**REAGENT BOTTLE CAPS, PRESSED**

	Price Per Doz.	Original Package Quantity Doz.	Weight per Bbl.
No. 1. Dia. 1¼ in., Height 2⅞ in., for 4 oz. bottle	\$ .35		12
No. 2. Dia. 1⅝ in., Height 2⅜ in., for 8 oz. bottle	.40		12
No. 3. Dia. 1⅞ in., Height 2¾ in., for 16 oz. bottle	.45		12
No. 4. Dia. 2⅞ in., Height 2⅞ in., for 32 oz. bottle	.50		12

18

**VALENTINE RECEIVER** (See Engraved Ware for illustration) \$2.90 3 110

**SCALE FEET or BALANCE REST** .34 12

**SLIDE BOX and COVER**, width 2 5/16, length 3 3/16 in. \$1.00 15 150

**COPLIN STAINING JAR AND COVER** Per Gross \$20.65 Original Package Quantity Doz. 21 Weight per Bbl. 170

**TEST GLASS No. 6**

	Per Doz.	Original Package Quantity Doz.	Weight per Bbl.
1 ounce	\$ 2.00	12	130
2 ounce	2.50	12	130
4 ounce	3.00	9	120
6 ounce	3.50	7	110
8 ounce	4.50	6	110

Please specify whether pointed or rounded bottoms are required.

**TWINE HOLDER**

**With Metal Screw Bottom**

Made in Blue, Crystal and Amber \$ 2.50 4½ 130

**No. 30. URINALS.**

Male or Female, Handled	\$ 2.50	3	100
Male or Female, No Handle	2.20	3½	100

**WATCHMAKERS' SUPPLIES**

<b>WATCH GLASSES</b>		Price Per Gross	Original Package Quantity Doz.	
No. 1.	Unfinished	\$ 3.00	12	
No. 1.	Unfinished Roughed Front	3.60	12	
No. 1.	Unfinished Full Polished	15.60	12	
No. 1.	Unfinished Full Polished with Roughed Front	14.00	12	
No. 2.	Minotes Unfinished	3.25	12	
No. 2.	Minotes Unfinished Roughed Top Edge	6.00	12	
No. 2.	Minotes Polished Top and Bottom	8.50	12	
No. 2.	Minotes Pol. Top & Bottom Roughed Top Edge	11.00	12	
No. 3.	Syracuse Unfinished	3.25	12	
No. 3.	Syracuse Roughed Top Edge	6.00	12	
No. 3.	Syracuse Polished Top and Bottom	8.50	12	
No. 3.	Syracuse Pol. Top & Bottom Roughed Top Edge	11.00	12	
No. 4.	Watch Glass same shape as No. 3. Specially made with ground in groove to stack up and be air-tight. Also has etched name or number plate on each	7.50	12	
<b>ALCOHOL CUP, WITH GROUND ON COVERS.</b>		Price Per Doz.	Original Package Quantity Doz.	Weight per Bbl.
No. 2803.	Capacity 3 oz., Dia. 2 9/16 in., depth 1 9/16 in.	\$ 1.90	25	125
No. 2804.	Capacity 8 oz., Dia. 3 5/8 in., depth 2 1/8 in.	2.50	15	125
No. 2811.	Cap. 12 oz., Knob Cover, Dia. 3 3/4 in., depth 2 3/8 in.	3.45	12	125
<b>BENZINE CUP AND GROUND ON COVER</b>		Price Per Doz.	Original Package Quantity Doz.	Weight per Bbl.
No. 2795.	Capacity 4 1/4 oz., Inside Dia. 2 7/8 in., depth 1 7/8 in.	\$ .90	20	150
No. 2796.	Capacity 2 oz., Inside Dia. 2 9/16 in., depth 1 1/4 in.	.90	20	150
<b>MOVEMENT COVERS</b>		Price Per Doz.	Original Package Quantity Doz.	Weight per Bbl.
3	in. Inside Diameter	\$ 1.10	12	125
3 1/4	in. Inside Diameter	1.10	11	125
3 1/2	in. Inside Diameter	1.10	10	125
3 3/4	in. Inside Diameter	1.20	9	125
4	in. Inside Diameter	1.30	8	125
4 3/4	in. Inside Diameter	1.50	7	125
5	in. Inside Diameter	1.65	6	125
5 1/4	in. Inside Diameter	1.80	6	125
5 1/2	in. Inside Diameter	2.00	6	125



# Special New Items

for

Labratory and Druggists'  
Supply Trade

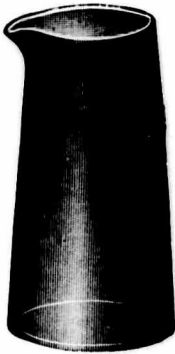


This class of glassware has heretofore been imported, but owing to European conditions we have taken up the manufacture of same, and are in position to duplicate the imported articles.

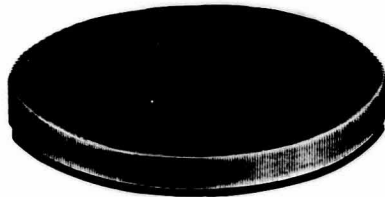
For large quantities we are prepared to make special low prices, so write us of your requirements.

If your requirements are special write us of them. We manufacture a complete line of Druggists, Laboratory and Photographers Supplies.

Write for Complete Catalog.



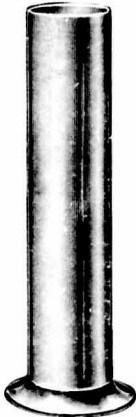
No. 34. Blown Precipitating Jar. Made in all sizes from 1/4 pt. to 3 gal. For prices and sizes see page 28. If quantity is required write for special prices



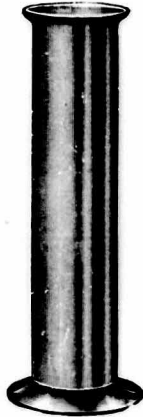
Petri Dish and Cover. Standard size E. Height 10/16 in. Dia. 3 15/16 in. although we can furnish in any height required. Also make a special size K. Height 22/32 in. Dia. 3 3/16 in. Price \$1.90 per doz.



60 degree. Hand made Chemical Long Stem Funnel. Point of Stem ground on an angle. Made in all sizes from 1 in. up to 13 in.



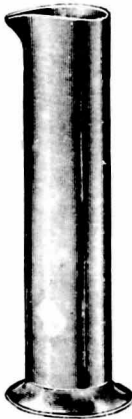
No. 1. Hydrometer Jar. Footed. Plain Top.



No. 3. Hydrometer Jar. Footed. Ground Rim. Can also be furnished with plain rim.

These three styles made in all sizes from 5x1 up to 20x3, or larger sizes can be specially made if required.

For prices and sizes see page No 27. If quantity is required of these write us for special prices.



No. 2. Hydrometer Jar. Footed and Lipped.

No. 214. Long Stem Chemical Funnel. Length of Stem Approx. 4 in., and top Dia. of Bowl as follows:

	Per Doz.
1 in. or 2.5 cm.	\$1.50
1 1/2 in. or 4 cm.	1.65
2 in. or 5 cm.	1.75
2 1/2 in. or 6.5 cm.	1.90
3 in. or 7.5 cm.	2.05
3 1/2 in. or 9 cm.	2.50
4 in. or 10 cm.	2.75
4 1/2 in. or 11 cm.	3.10
5 1/4 in. or 13 cm.	3.25
6 in. or 15.5 cm.	3.90
6 3/4 in. or 17 cm.	4.50
8 1/2 in. or 21.5 cm.	6.50
9 in. or 23 cm.	7.00
10 in. or 25.5 cm.	8.00
13 in. or 33 cm.	15.00

No. 216. Same as above but ground as described below.

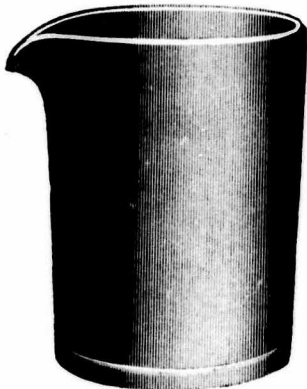
Above can be furnished with fine emery ground top edge to fit plate at 15c doz. for 1 in. up to 4 in. and 25c doz. for 4 1/2 in. up to 13 in. Exact dimensions are not guaranteed, but will run as close as the imported funnel.

No. 218. Extra Long Stem Chemical Funnel. Length of Stem Approx. 6 in., and top Dia. of Bowl as follows:

	Per Doz.
1 in. or 2.5 cm.	\$2.20
1 1/2 in. or 4 cm.	2.35
2 in. or 5 cm.	2.50
2 1/2 in. or 6.5 cm.	2.65
3 in. or 7.5 cm.	3.00
3 1/2 in. or 9 cm.	3.40
4 in. or 10 cm.	3.75

No. 220. Same as above but ground as described below.

Above can be furnished with fine emery ground top edge to fit plate at 20c dozen.



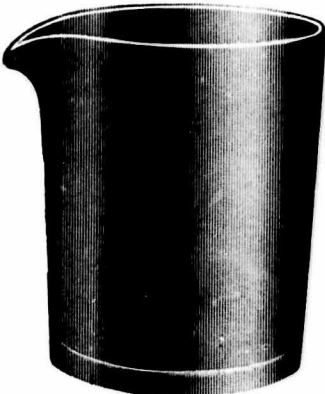
**GRADUATE BLANKS. PLAIN, NO GRADUATIONS.**

See page 5 for Shapes.

1 dr. or 60 m m	.....
2 dr. or 120 m m	.....
1/2 oz.	.....
1 oz.	.....
2 oz.	.....
3 oz.	.....
4 oz.	.....
6 oz.	.....
8 oz.	.....
12 oz.	.....
16 oz.	.....
32 oz.	.....

Cone or Perfection Price Doz.	Beaker Shape Price Per Doz. \$
.63	
.63	
.57	.58
.60	.44
.70	.50
.68	
.73	.57
.75	.75
.88	
1.00	
1.38	1.13
2.20	1.70

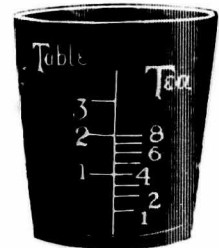
No. 71. Lipped Beaker Tumbler.  
Capacity 8 oz.  
Pack 20 dozen in a barrel.  
Price 65c per dozen.



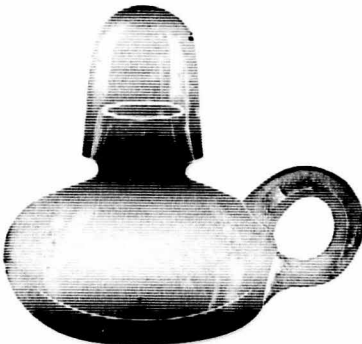
No. 151. Lipped Beaker Tumbler  
Capacity 7 oz.  
Pack 20 dozen in barrel.  
Price 49c per dozen.



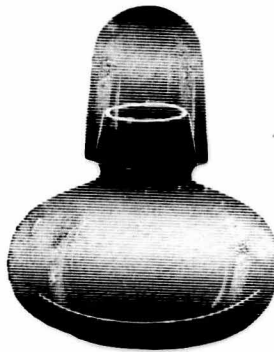
No. 810. 4 oz. Medicine.  
Enamel lettered.  
Graduated in 8 tea and  
3 tablespoons.  
Furnished with ad in white  
enamel lettering.  
Price \$6.00 per gross.  
12 dozen make package.



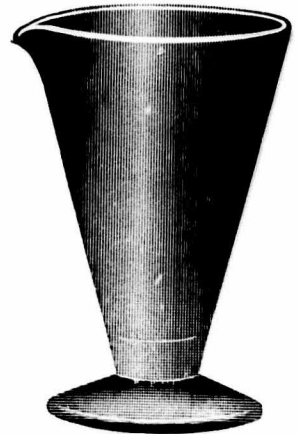
No. 15. 4 oz. Medicine.  
Red Enamel Lettered.  
Graduations in 8 tea and  
3 table-poons.  
Furnished with ad in red enamel.  
Price per gross \$6.25.  
12 dozen make package.



No. 6. Alcohol Lamp.  
With Handle. Capacity 3 oz.  
Furnished with Porcelain  
Wick and Burner.  
Price \$1.75 per dozen.  
Also furnished without  
Wick and Burner.  
Price \$1.50 per dozen.  
Pack 15 dozen in barrel.

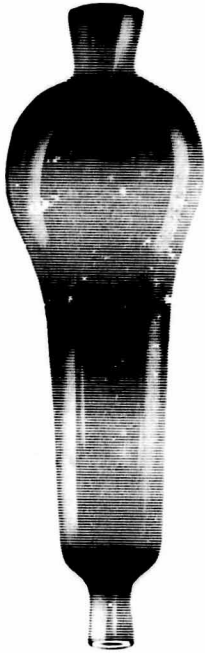


No. 7. Alcohol Lamp.  
Capacity 3 oz.  
Furnished with Porcelain  
Burner and Wick.  
Price \$1.50 per dozen.  
Also furnished without wick  
and burner.  
Price \$1.00 per dozen.  
Pack 18 dozen in barrel.

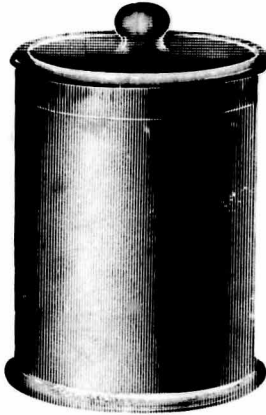


Sediment Glass.  
Capacity 3 oz.  
Price \$3.50 per dozen.  
Pack 12 dozen in barrel.

Ten per cent. will be added to foot of invoices for less than package lots.



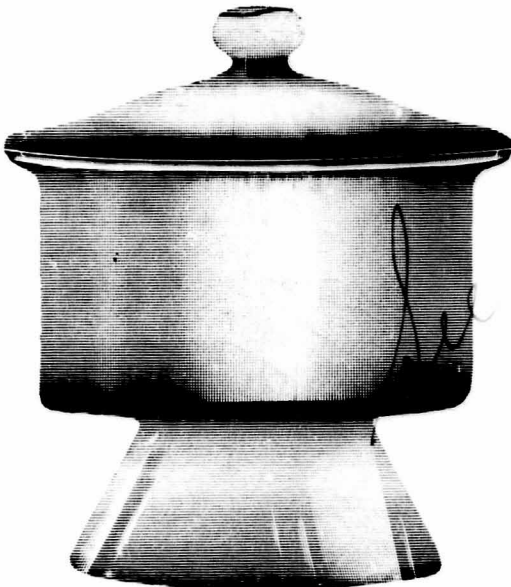
Hydro Syringe Tube.  
Price \$6.00 per dozen.  
Pack 15 dozen in barrel.



No. 083.  
Rd. Dental Alcohol Jar.  
Dia. 4 5/8 in.  
Height 6 3/4 in.  
Inside measure.  
Price per dozen \$5.00.  
Pack 1 2-3 doz. in barrel.



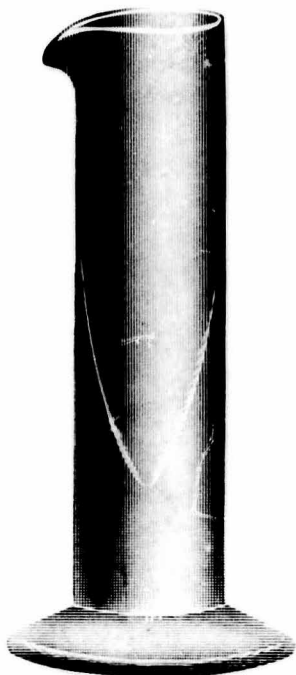
No. 43. Scheibler Desiccating Jar.  
Hole in top. Dia. 6 in.  
Price per dozen \$10.00.  
Pack 1/2 dozen in a barrel.  
Hand Made.  
Cover ground on.



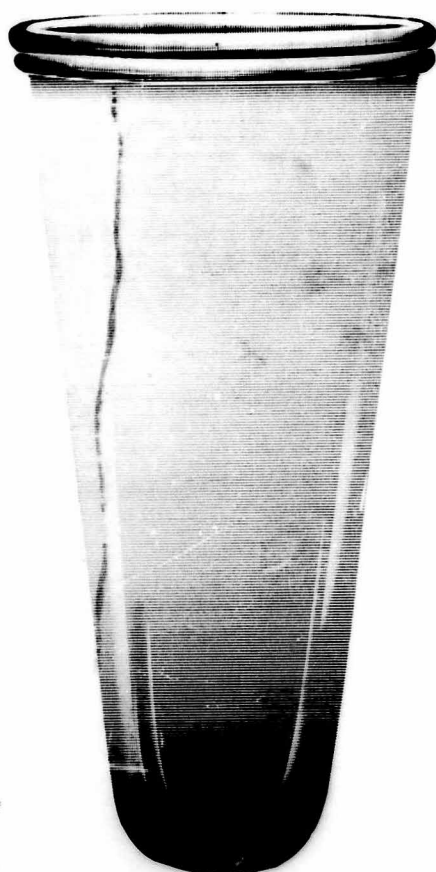
No. 41. Desiccating Jar.  
Dia. 8 in. inside.  
Height 11 inches.  
Cover ground on.  
Hand Made.  
Price \$24.00 per dozen.  
Pack 1/2 dozen in barrel.



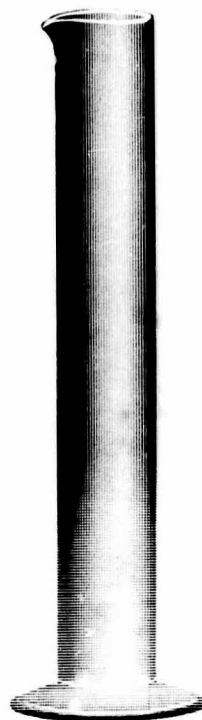
No. 42. Desiccating Jar.  
Dia. 8 in. inside.  
Height 12 inches.  
Cover ground on.  
Hand Made.  
Price \$24.00 per dozen.  
Pack 1/2 dozen in barrel.



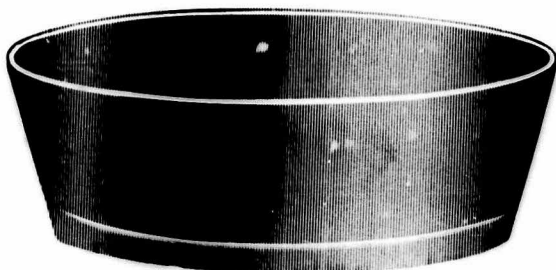
No. 5. Hydrometer Jar.  
 Urinometer Jar and  
 Sediment Glass Combined.  
 8x2—\$7.00 per dozen.  
 6x1½ in.—\$5.50 per dozen.  
 Pack 15 dozen in barrel.  
 Can also be furnished  
 graduated.



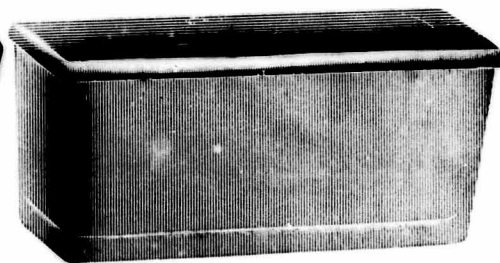
Arm Imersion Bowl.  
 Size, outside diameter at top  
 9½ inches.  
 Size, outside diameter at  
 bottom 4 in.  
 Outside height over all 18 in.  
 Price \$18.00 per dozen.  
 Pack 2-3 dozen in tierce.



No. 4. Hydrometer Jar.  
 Height 7x13/16 Dia.  
 Price \$1.25 doz.  
 Height 5½x13/16 Dia.  
 Price \$1.15 per doz.  
 Height 4x13/16 Dia.  
 Price \$1.10 per doz.  
 All inside measurements.  
 Pack 20 dozen in barrel.  
 Made of light thin blown  
 glass.  
 Can also be furnished  
 graduated.



Surgical Bowls.  
 Dia. 12 in. Price \$15.00 per dozen.  
 Dia. 14 in. Price \$18.00 per dozen.  
 Pack 1 dozen in barrel. Pack ¼ dozen in barrel.  
 Dia. 8 in. Price \$7.00 per dozen.  
 Pack 2½ dozen in barrel.



No. 084. Oblong Box.  
 Length 4½ in.  
 Height 1¾ in.  
 Width 1 9/16 in.  
 Inside measure.  
 Price \$2.00 per dozen.  
 Pack 18 dozen in barrel.

**NEW STYLE COMBINATION URINAL.**

No. 40. Urinal.

Made so as to stand.

The mouth of this Urinal is so made that it will answer for either the male or female.

Capacity 38 oz.

Made in Plain or Graduated.

Plain.

Price \$4.25 per dozen.

Pack 2 dozen in a barrel.

Graduated 32 oz.

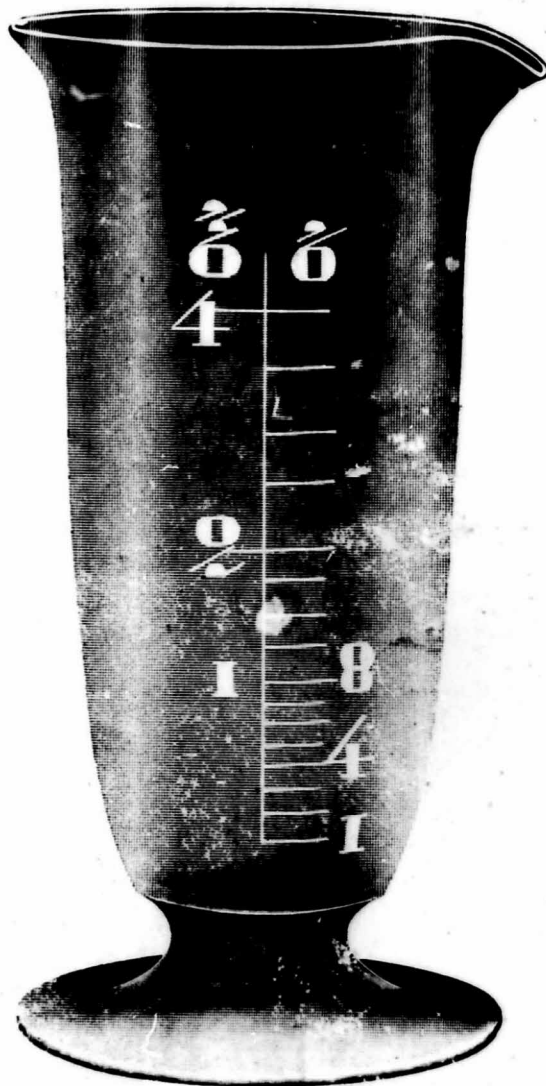
Price \$6.50 per dozen.

Pack 2 dozen in a barrel.

# OUR LEADER GRADUATE

By revised method, we now produce accurate graduates as illustrated. The system is the same as that used on our standard style, and have the same accuracy, but with less engraving. We can offer this style **LEADER** at

**Less  
Cost  
Than  
Regular  
Standard**



Can be Furnished in either Cone or Perfection Shape in Single, Metric or Double Scale.

## Hand Engraved Graduates

We use in our engraving department a special device of our own which enables us to warrant the accuracy of our work. Each line on every graduate is determined separately and with the same precision. We guarantee each graduate as to accuracy of engraving and fine quality of glass.

Many of our customers desire to have their firm's trade mark or name etched on each graduate. We are prepared to execute this work at a cost of 15 cents per dozen net, plus cost of stamp.

Graduates all shapes, are engraved all ways as follows:

Single American Standard in ounces.

Metric Standard in C. C.

Double Scale is for Single American on one side and Single Metric on the opposite side.

Price List is the same for either shape, Cone Beaker or Perfection.

Packed separately in paper cartons, each carton printed with kind of graduate and capacity. Blank space left for your name. We are equipped to stamp names on cartons at a small extra cost.

## PRICE LIST

Single American Scale in ounces Per Doz.	Single Metric Scale in C. C. Per Doz.	Double Scale Ounces and C. C. Per Doz.	Original Package Quantity Doz.	Weight Per Bbl.
1 dr. or 60 m. \$1.55	5 c c \$1.55	\$1.90	60	150
2 dr. or 120 m. 2.00	10 c c 2.00	2.50	50	150
1/2 oz. 1.15	15 c c 1.25	1.55	40	130
1 oz. 1.25	30 c c 1.35	1.75	30	120
2 oz. 1.35	60 c c 1.50	1.85	16	120
3 oz. 1.55	100 c c 1.70	2.15	12	100
4 oz. 1.65	125 c c 1.85	2.20	7	90
6 oz. 1.80	200 c c 2.10	2.50	6	80
8 oz. 1.95	250 c c 2.40	3.35	4 1/2	80
12 oz. 2.60	375 c c 3.10	4.40	3	80
16 oz. 3.10	500 c c 3.75	5.60	2	100
32 oz. 5.50	1000 c c 6.35	6.90	1	100

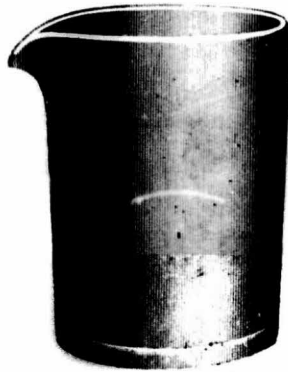
**Be sure and specify LEADER GRADUATE when ordering**

**GRADUATE BLANKS—PLAIN NO GRADUATIONS**

	Cone or Perfection Shape Price Per Doz.	Beaker Shape Price Per Doz. \$
1 dr. or 60 mm.	.85	
2 dr. or 120 mm.	.90	
1 oz.	.65	.45
2 oz.	.70	.50
3 oz.	.80	.55
4 oz.	.80	
4 oz.	.85	.65
6 oz.	.85	
8 oz.	.95	.85
12 oz.	1.10	
16 oz.	1.50	1.25
32 oz.	2.50	1.90



Cone Shape



Beaker Shape



Perfection Shape

**HAND MADE CHEMICAL FUNNELS**

**No. 218. Extra Long Stem Chemical Funnel.**

Length of Stem and top Dia. of Bowl as follows:

Diam. of Bowl	Length Stem	Price Per Doz.
1/2 Inch	6 Inch	\$1.55
1 "	6 "	1.70
1 1/2 "	6 "	1.75
2 "	6 "	1.90
2 1/2 "	6 "	2.05
3 "	6 "	2.25
3 1/2 "	6 "	2.50
4 "	6 "	2.65
4 1/4 "	6 "	3.25
5 "	6 "	4.15
5 1/2 "	6 "	4.40
6 "	6 "	4.75
6 1/4 "	6 "	4.90
6 3/4 "	6 "	5.65

**No. 214. Long Stem Chemical Funnel.**

Length of Stem and top Dia. of Bowls as follows:

Diam. of Bowl	Length Stem	Price Per Doz.
1/2 Inch	2 Inch	\$ 1.05
1 "	2 1/2 "	1.20
1 1/2 "	2 1/2 "	1.35
2 "	2 1/2 "	1.45
2 1/2 "	2 1/2 "	1.65
3 "	2 1/2 "	1.80
3 1/2 "	2 1/2 "	1.95
4 "	4 "	2.05
4 3/8 "	4 "	2.50
5 "	4 "	3.15
5 1/4 "	4 "	3.55
6 "	4 "	4.05
6 1/4 "	4 "	4.40
6 3/4 "	4 "	5.00
7 "	6 "	5.65
8 "	6 "	6.25
8 1/2 "	7 "	7.50
9 "	8 "	11.25
10 "	9 "	12.20
12 "	9 "	17.50
13 "	9 "	20.65



60 degree Hand made Chemical Long Stem Funnel.

Point of Stem ground on an angle. Made in all sizes from 1 in. up to 13 in.

Exact dimensions are not guaranteed, but will run as close as the imported Funnel. Funnel are all ground on top edge to fit plate. If special length stems are wanted, we can make them.

Prices upon application.

Customers should specify Funnel No. when ordering, so that correct stem length will be shipped.



# NEW GOVERNMENT STANDARD SHAPE GRADUATE

This is the new Shape that passes the Government's new Standard of Weights and Measures. Some States have already adopted this Standard, others have legislation pending, so stock this Shape now and be prepared.

## HAND ENGRAVED GRADUATES

We use in our engraving departments a special brand of our own which enables us to warrant the accuracy of our work. Each line on every graduate is engraved separately and with the same precision. We guarantee each graduate as to accuracy of engraving and the quality of glass.

Many of our customers desire to have their firm's trade mark or name etched on each graduate. We are prepared to execute this work at a cost of 10 cents per ounce net, plus cost of stamp.

Graduates all shapes are engraved all ways as follows:

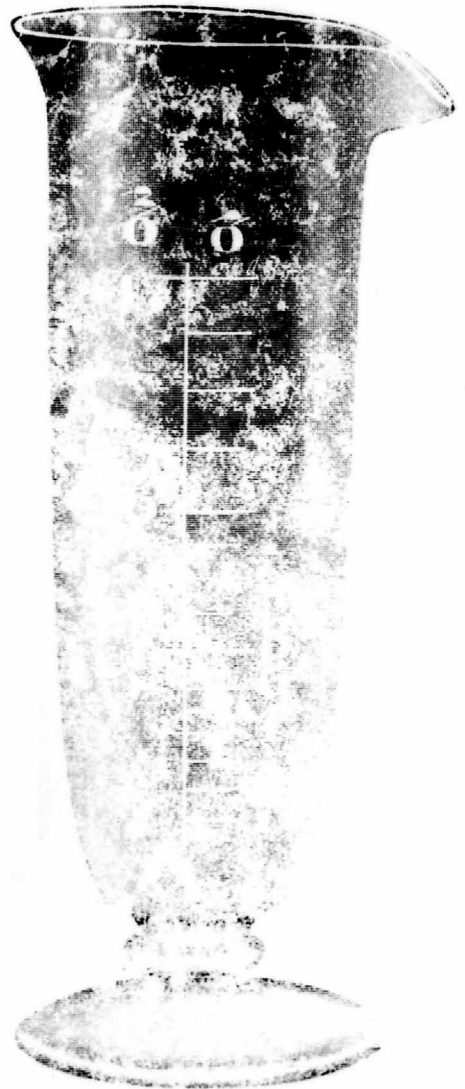
Single American Standard in ounce

Metric Standard in C. C.

Double Scale is for Single American on one side and Single Metric on the opposite side

Price List is the same for either shape, Government Cone, Beaker or Perfection.

Packed separately in paper cartons, each carton printed with kind of graduate and capacity. Blank space left for your name. We are equipped to stamp names on cartons at a small extra cost.



## STANDARD PRICE LIST

	Single American Scale in ounces Per Doz.	Double Scale Ounces and C. C. Per Doz.	Single Metric Scale in C. C. Per Doz.	Original Package Quantity Per Doz.	Weight Per Bbl.
120 ml.	\$1.85	\$2.30	\$1.85	60	150
150 ml.	2.25	2.70	2.25	50	150
180 ml.	1.35	1.85	1.60	40	150
210 ml.	1.50	1.15	1.75	30	150
240 ml.	1.65	1.35	1.90	15	120
270 ml.	1.85	2.65	2.10	12	100
300 ml.	2.00	3.05	2.25	6	90
330 ml.	2.20	3.65	2.65	6	80
360 ml.	2.40	4.30	3.00	4 1/2	80
390 ml.	2.70	5.10	3.90	3	80
420 ml.	3.00	6.00	4.70	2	70
450 ml.	3.30	7.00	5.60	1	70

quantity discounts, Glass P. O. B. C. non-grad. Regular Charges and terms.

This illustration shows New Government shape in Leader Style of Engraving.

Can be furnished in either single, metric or double scale.

Either our Standard or Leader style of Engraving.

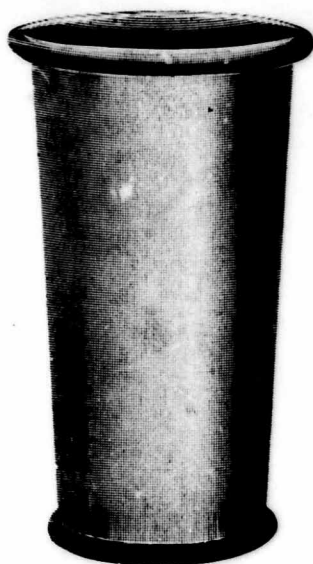
Prices on this new shape same as on our Cone, Perfection or Beaker Shapes.

Be sure and check shape as you order or engraving will not be correct. Order from New Government Standard Shape Graduate Co. 1100 Broadway, New York, N. Y.





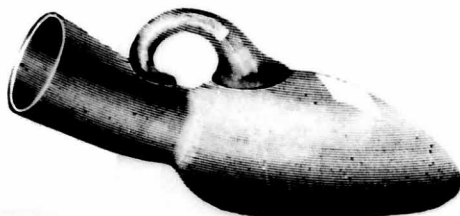
Solution Bowl  
 Size outside diameter at top  
 16 in.  
 Size outside diameter at bot-  
 tom 12 in.  
 Height Overall 8 in.  
 Price \$30.00 Per Doz.  
 Pack 1/4 Doz. in Bbl.



Arm Immersion Bowl  
 Flat Bottom  
 Size Outside Diameter at  
 Top 9 in.  
 Size Outside Diameter at  
 Bottom 7 1/4 in.  
 Height Over All 16 1/2 in.  
 Price \$24.00 Per Doz.  
 Pack 1/4 Dozen in Bbl.

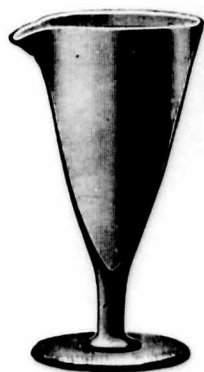


0183 Jar with Ground on  
 Cover  
 Size Diameter 4 3/4 inches  
 Height 6 1/4 inches  
 Price \$5.50 Per Doz.  
 Pack 1 1/2 Doz. in a Bbl.



Urinal with Sand Blast Space  
 2 1/2 in. Long and 1 in. Wide,  
 for marking  
 Price \$2.25 Per Dozen  
 Pack 3 Dozen in a Bbl.

Can be furnished on either  
 male or female. Space can  
 also be placed on graduated  
 Urinals at extra cost of 50c  
 per dozen.



New Style Test Glass made  
 of light thin Blown Glass  
 same as imported style.  
 For sizes and prices see page  
 29.

No. 6. Test Glass.



1632—5 oz. Specimen Jar  
 Size—Dia. at Top 1 15/16 in.  
 Dia. at Bottom 1 13/16 in.  
 Height 3 3/4 in.  
 Price \$1.00 Per Doz.  
 Pack 36 Doz. in Bbl.

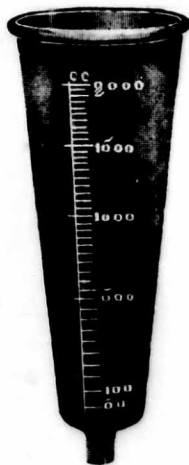
# GRADUATE CYLINDERS

Machine Graduated and Etched, Made in Single and Double Scale.



Size of Blank Inside Meas.				Price Per Doz.	Price Per Doz. <b>Graduated</b>	
				Plain Blank Not Graduated	Double Scale	Single Scale
3/8x3 1/4	5 c c grad. in	1/5	c c	\$1.50	\$1.90	\$1.80
1/2x3 7/8	10 c c " "	1/5	c c	1.35	1.75	1.65
3/4x5 3/8	25 c c " "	1/2	c c	1.50	2.00	1.90
15/16x6 3/4	50 c c " "	1/2	c c	1.75	2.25	2.10
1 1/8x9 1/4	100 c c " "	1	c c	2.25	3.25	3.00
1 3/8x11	200 c c " "	2	c c	2.75	4.25	4.00
1 1/2x11 3/4	250 c c " "	2	c c	3.00	4.50	4.25
1 15/16x13 5/8	500 c c " "	5	c c	4.00	6.00	5.65
2 5/16x17 1/2	1000 c c " "	10	c c	5.50	9.60	8.65

## Graduate Percolators



No. 1 or 5 Shape

Other shapes can be furnished if required. Ask for Prices.

## WATER TEST GLASSES

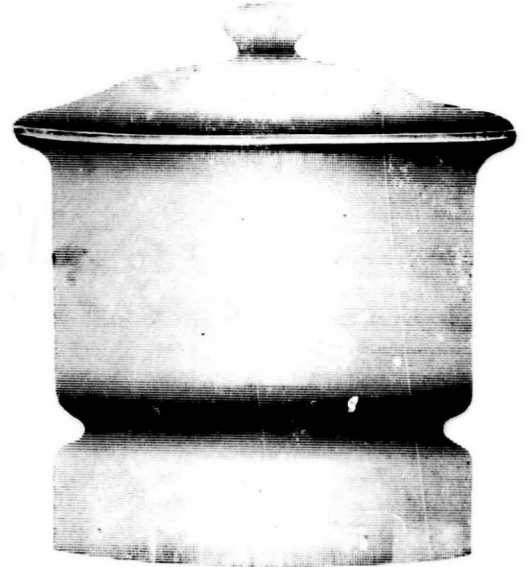


12 in length x 3/4 dia.	\$3.50 Doz.
12 in length x 1 dia.	\$3.50 Doz.
If graduated with 100 c c mark 50c per dozen extra.	
6 3/4 length x 1 3/8 dia.	\$1.75 Doz.
6 3/4 length x 1 1/8 dia.	\$1.75 Doz.

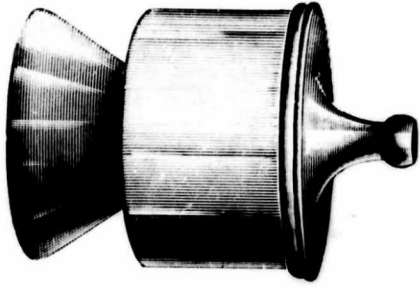
Size	Graduated in Oz. Price Per Doz.	Graduated in c c Price Per Doz.
1 Pt. 16 oz.	\$ 3.75	500 c c \$ 4.50
1 Qt. 32 oz.	5.50	1000 c c 7.50
1/2 Gal. 64 oz.	7.75	2000 c c 10.50
1 Gal. 128 oz.	12.00	4000 c c 15.00
1 1/2 Gal. 192 oz.	15.00	6000 c c 18.00
2 Gal. 256 oz.	18.00	8000 c c 21.00
3 Gal. 484 oz.	30.00	12000 c c 33.00



No. 41. Desiccating Jar  
Cover ground on.  
Hand Made. Dia. 8 in. inside.  
Height 11 inches. Price \$24.00 per dozen  
Pack 1/2 dozen in barrel.  
Also made— Dia. 10 in. inside  
Height, 12 1/2 in. inside.  
Price \$40.00 per dozen.



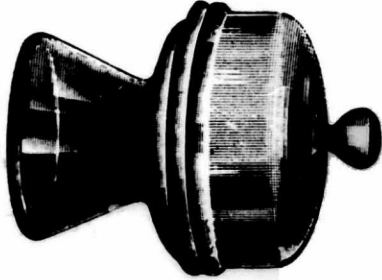
No. 42. Desiccating Jar.  
Cover ground on.  
Hand Made.  
Dia. 8 in. inside.  
Height 11 inches.  
Price \$24.00 per dozen  
Pack 1/2 dozen in barrel  
Also made—  
Dia. 10 in. inside  
Height 12 in. inside.  
Price \$40.00 per dozen  
Pack 1/2 dozen in bbl.  
Either size can be furnished  
with hole in cover at extra  
cost of \$2.50 per dozen



No. 10. Desiccating Jar  
Hand Made. Top Ground on  
Made in following sizes:

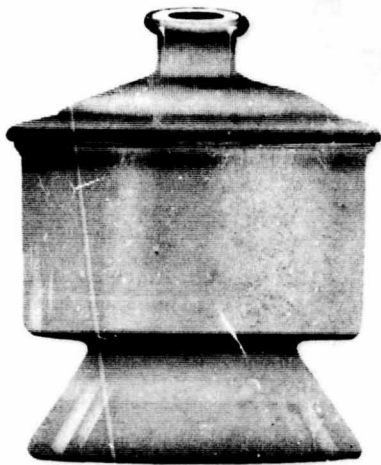
4 in. Inside Dia. 7 1/2 in. high, price per doz. \$ 6.50—3  
6 in. Inside Dia. 8 1/2 in. high, price per doz. 7.50—1  
8 in. Inside Dia. 11 in. high, price per doz. 24.00—1/2  
10 in. Inside Dia. 12 1/2 in. high, price per doz. 49.00—1/2

Pack doz. Bbl.

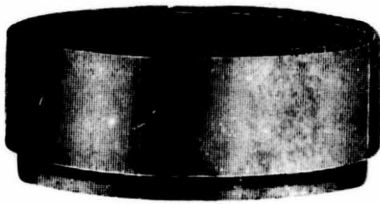


No. 30. Desiccating Jar  
Hand made.  
"Atwater."  
Top Ground on

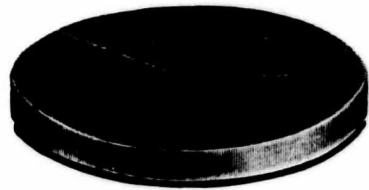
4 in. Inside Dia. 5 1/2 in. high  
Price Per Doz. \$12.50  
Pack 1/2 Doz. in bbl.



No. 43. Scheibler Desiccating Jar.  
Also made—  
Hand Made. Dia. 8 in. inside. Height 11 in.  
Cover ground on. Price \$24.00 per dozen  
Hole in top. Pack 1/2 dozen in bbl.  
Dia. 6 in. Inside. Also made—  
Height 8 1/2 in. Dia. 10 in. inside.  
Price per dozen \$10.00 Height 12 1/2 in.  
Pack 1/2 dozen in a barrel. Price 42.00 per dozen  
Pack 1/2 dozen in barrel



2033. Moistener Chamber  
 Cover dia. 198 mm x height  
 62 mm, or dia. 7<sup>7</sup>/<sub>8</sub> in. x  
 height 2 7/16 in.  
 Bottom dia. 184 mm. x height  
 70 mm, or dia. 7<sup>1</sup>/<sub>4</sub> in. x  
 height 2 1/4 in.  
 Price \$19.20 per dozen com-  
 plete.  
 Price \$8.10 per dozen, cover  
 only.  
 Price \$10.80 per dozen bot-  
 tom only.



Petri Dish and Cover  
 Made in various sizes as fol-  
 lows.

**ALL OUTSIDE MEASUREMENTS.**

	Measurements in Millimeters		Measurements in Inches
Size A.—Cover diam.	100 x Hi.	49	3 7/8 x 1 9/16
Bottom diam.	95 x Hi.	22	3 21/32 x 7/8
Size E.—Cover diam.	100 x Hi.	127	3 15/16 x 5 1/8
Bottom diam.	95 x Hi.	139	3 13/16 x 9 1/16
Size H.—Cover diam.	100 x Hi.	97	3 29/32 x 3 5/8
Bottom diam.	95 x Hi.	97	3 11/16 x 3 5/8
Size K.—Cover diam.	80 x Hi.	47	3 1/8 x 2 1/8
Bottom diam.	75 x Hi.	46	2 31/32 x 1 5/8

Price in 40 gross lots or over \$16.50 per gr.  
 Price in 20 gross lots or over \$18.25 per gr.  
 Less than 20 gross lots— \$20.00 per gr.

Size L.—Cover diam.	60 x Hi.	16	2 3/8 x 5/8
Bottom dia.	56 x Hi.	16	2 3/16 x 5/8

Price in 40 gross lots or over \$14.85 per gr.  
 Price in 20 gross lots or over \$16.55 per gr.  
 Less than 20 gross lots— \$18.00 per gr.

Petri dishes packed 12 in a Corrugated Carton and 12 Car-  
 tons in a wooden crate, at 50c for package.



No. 150. Bandage Jars.  
 Made in following sizes.

Price per doz.  
 4x4 Jar Plain R'd Knob \$3.60  
 4x4 Jar, Cut Knob 4.00  
 6x6 Jar Plain, R'd. Knob 7.20  
 6x6 Jar Cut Knob 8.00



2245. Large Size Petri Dish  
 Cover dia. 220 mm x height  
 30 mm, or diam 8 1/2 in.  
 x height 1 3/16 in.  
 Bottom dia. 210 mm. x height  
 29 mm, or dia. 8 1/4 in.  
 x height 1 1/8 in.  
 Price \$9.00 per dozen com-  
 plete.